

TECHNICAL MANUAL

ORGANIZATIONAL, DIRECT SUPPORT,

AND GENERAL SUPPORT

MAINTENANCE REPAIR PARTS

AND SPECIAL TOOLS LISTS

FOR

Q-METER TS-617C/U

HEADQUARTERS, DEPARTMENT OF THE ARMY

MARCH 1977

TECHNICAL MANUAL }
 No. 11-6625-471-24P-4 }

HEADQUARTERS
 DEPARTMENT OF THE ARMY
 WASHINGTON, DC, 29 March 1977

ORGANIZATIONAL, DIRECT SUPPORT, AND GENERAL SUPPORT MAINTENANCE

REPAIR PARTS AND SPECIAL TOOLS LISTS

FOR

Q-METER TS-617C/U

Current as of 15 October 1976

Table of Contents

REPORTING OF ERRORS

You can improve this manual by recommending improvements using DA Form 2028-2 (Test) located in the back of the manual. Simply tear out the self addressed form, fill it out as shown on the sample, fold it where shown, and drop it in the mail.

If there are no blank DA Form 2028-2 (Test) in the back of your manual, use the standard DA Form 2028 (Recommended Changes to Publications and Blank Forms) and forward to the Commander, US Army Electronics Command, ATTN: DRSEL-MA-Q, Fort Monmouth, NJ 07703.

In either case a reply will be furnished direct to you.

SECTION		Page	Illus Figure
	I. Introduction	5	
	II. Repair parts list	5	
Group	00 Q-Meter TS-617C/U	5	1
	01 Panel assembly	7	2
	Vtvm assembly	11	3
	Capacitor assembly	13	4
	Oscillator assembly	15	5
	Turret assembly	17	6
	0101 Case assembly	19	7
	Power supply	21	8
	0102 Cover assembly	23	9
	010201 Cable Assembly, RF CG-1432/U	25	10
	02 Accessory case assembly	27	11
	Cover assembly	29	12
	Case assembly	31	13
	Case subassembly	33	14
	0201 Cable assembly, power	35	15
SECTION	III. Special tools list (NOT APPLICABLE)		
	IV. National stock number and part, number index	37	

SECTION I

INTRODUCTION

1. Scope

This manual lists repair parts for the performance of organizational, and general support maintenance of the TS-617C/U.

2. General

This Repair Parts and Special Tools List is divided into the following sections:

a. Section II—Repair Parts List. A list of repair parts authorized for use in the performance of maintenance. The list also includes parts which must be removed for replacement of authorized parts. Parts lists are composed of functional groups in ascending numerical sequence, with the parts in each group listed in figure and item number sequence.

b. Section III—Special Tools List. Not applicable.

c. Section IV—National Stock Number and Part Number Index. A list, in National item identification number (NIIN) sequence of all National stock numbers (NSN) appearing in the listings, followed by a list, in alphanumeric sequence, of all part numbers appearing in the listings. National stock numbers and part numbers are cross-referenced to each illustration figure and item number appearance.

3. Explanation of Columns

The following provides an explanation of columns found in the tabular listings:

a. Illustration. This column is divided as follows

(1) *Figure number.* Indicates the figure number of the illustration in which item is shown.

(2) *Item number.* The number used to identify each item called out in the illustration.

b. Source, Maintenance, and Recoverability Codes (SMR).

(1) *Source Code.* Source codes are assigned to support items to indicate the manner of acquiring support items for maintenance, repair, or overhaul of end items. Source codes are entered in the first and second positions of the Uniform SMR Code format as follows:

<i>Code</i>	<i>Definition</i>
-------------	-------------------

PA—Item procured and stocked for anticipated or known usage.	
--	--

<i>Code</i>	<i>Definition</i>
-------------	-------------------

XD—A support item that is not stocked. When required, item will be procured through normal supply channels.	
---	--

NOTE

Cannibalization or salvage may be used as a source of supply for any items source-coded above, except those coded XD and aircraft support items as restricted by AR 700-42.

(2) *Maintenance code.* Maintenance codes are assigned to indicate the levels of maintenance authorized to USE and REPAIR support items. The maintenance codes are entered in the third and fourth positions of the Uniform SMR Code format as follows:

(a) The maintenance code entered in the third position will indicate the lowest maintenance level authorized to remove, replace, and use the support item. The maintenance code entered in the third position will indicate one of the following levels of maintenance:

<i>Code</i>	<i>Application/Explanation</i>
-------------	--------------------------------

O—Support item is removed, replaced, used at the organizational level.	
--	--

H—Support item is removed, replaced, used at the general support level.	
---	--

(b) The maintenance code entered in the fourth position indicates whether the item is to be repaired and identifies the lowest maintenance level with the capability to perform complete repair (i.e., all authorized maintenance functions). This position will contain one of the following maintenance codes.

<i>Code</i>	<i>Application/Explanation</i>
-------------	--------------------------------

H—Reparable item. When uneconomically reparable, condemn and dispose at the general support level.	
--	--

Z—Nonreparable item. When unserviceable, condemn and dispose at the level indicated in position 3.	
--	--

(3) *Recoverability code.* Recoverability codes are assigned to support items to indicate the disposition action on unserviceable items. The recoverability code is entered in the fifth position of the Uniform SMR Code format as follows:

Recoverability
Code

Definition

Z-Nonreparable item. When unserviceable, condemn and dispose at the level indicated in position 3.

H-Reparable item. When uneconomically reparable, condemn and dispose at the general support level.

c. National Stock Number. Indicates the National stock number assigned to the item and will be used for requisitioning purpose.

d. Part Number. Indicates the primary part number used by the manufacturer (individual, company, firm, corporation, or Government activity) which controls the design and characteristics of the item by means of its engineering drawings, specifications standards, and inspection requirements, to identify an item or range of items.

NOTE

When a stock numbered item is requisitioned, the repair part received may have a different part number than the part being replaced.

e. Federal Supply Codes for Manufacturer (FSCM). The FSCM is a 5-digit numeric code listed in SB 708-42 which is used to identify the manufacturer, distributor, or Government agency, etc.

f. Description. Indicates the Federal item name and, if required, a minimum description to identify the item.

g. Unit of Measure (UIM). Indicates the standard of the basic quantity of the listed item as used in performing the actual maintenance function. This measure is expressed by a two-character alphabetical abbreviation (e.g., ea, in, pr, etc). When the unit of measure differs from the unit of issue, the lowest unit of issue that will satisfy the required units of measure will be requisitioned.

h. Quantity Incorporated in Unit. Indicates the quantity of the item used in the breakout shown on the illustrated figure, which is prepared for a functional group, subfunctional group, or an assembly.

4. Special Information

(Not applicable)

5. How to Locate Repair Parts

a. When National stock number or part number is unknown:

(1) *First.* Using the table of contents, determine the functional group within which the repair part belongs. This is necessary since illustrations are prepared for functional groups, and listings are divided into the same groups.

(2) *Second.* Find the illustration covering the functional group to which the repair part belongs.

(3) *Third.* Identify the repair part on the illustration and note the illustration figure and item number of the repair part.

(4) *Fourth.* Using the Repair Parts Listing, find the figure and item number noted on the illustration.

b. When National stock number or part number is known

(1) *First.* Using the Index of National Stock Numbers and Part Numbers, find the pertinent National stock number or part number. This index is in ascending NSN sequence, followed by a list of part numbers in ascending alphanumeric sequence, cross - referenced to the illustration figure and item number.

(2) *Second.* After finding the figure and item number, locate the figure and item number in the repair parts list.

6. Abbreviations

(Not applicable)

(Next printed page is 4.)

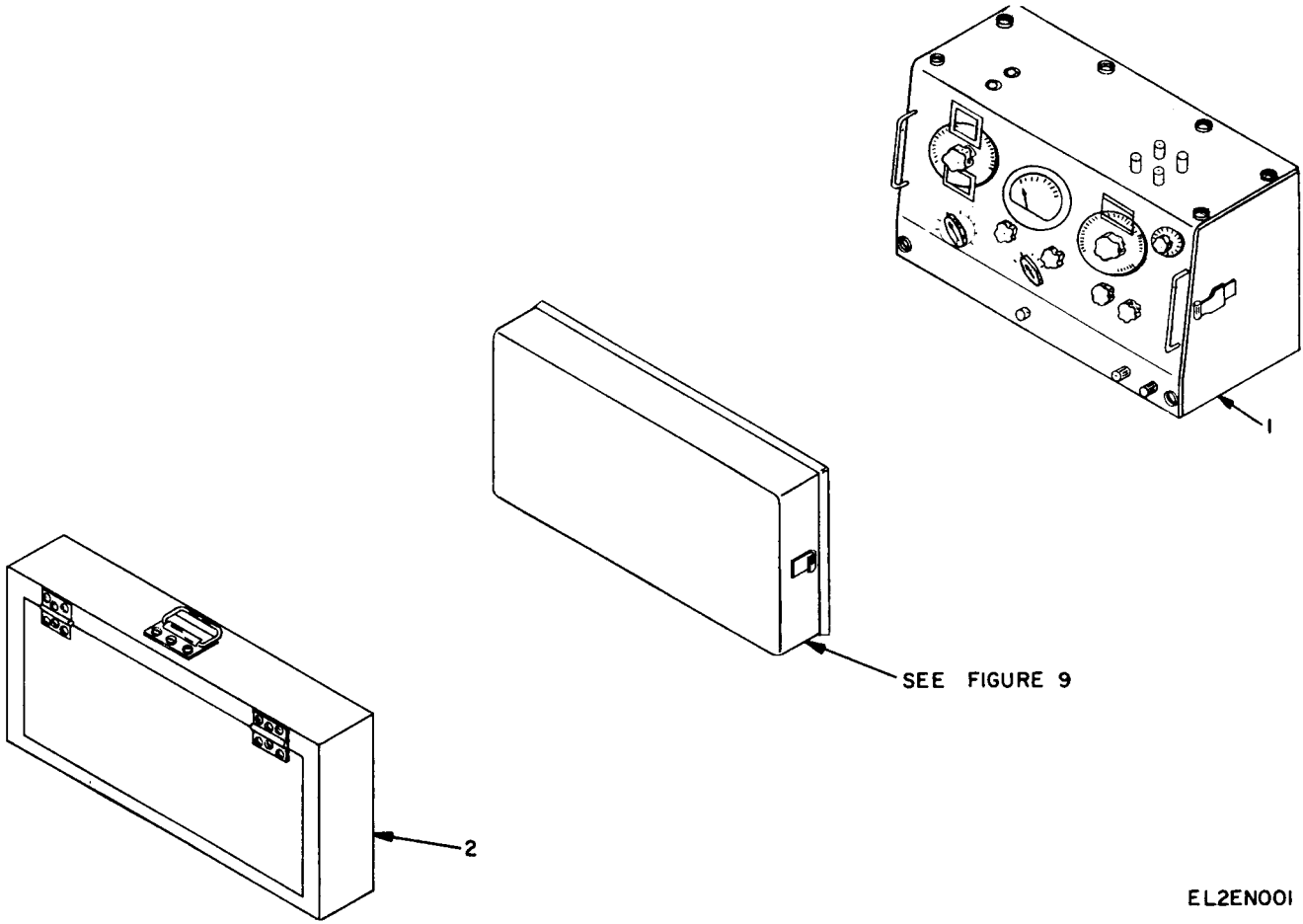


Figure 1. Q-Meter TS-617C/U.

SECTION II (1) ILLUSTRATION				TM11-6625-471-24P-4 (4)				(7)	(8)
(a) FIG NO.	(b) ITEM NO.	SMR CODE	NATIONAL STOCK NUMBER	PART NUMBER	FSCM	DESCRIPTION	USABLE ON CODE	U/M	QTY INC IN UNIT
						GROUP 00 Q-METER TS-617C/U			
1	1	XDHHH		SMD183552	80063	CASE ASSEMBLY		EA	1
1	2	XDHHH		SMD183472	80063	CASE ACCESSORY		EA	1

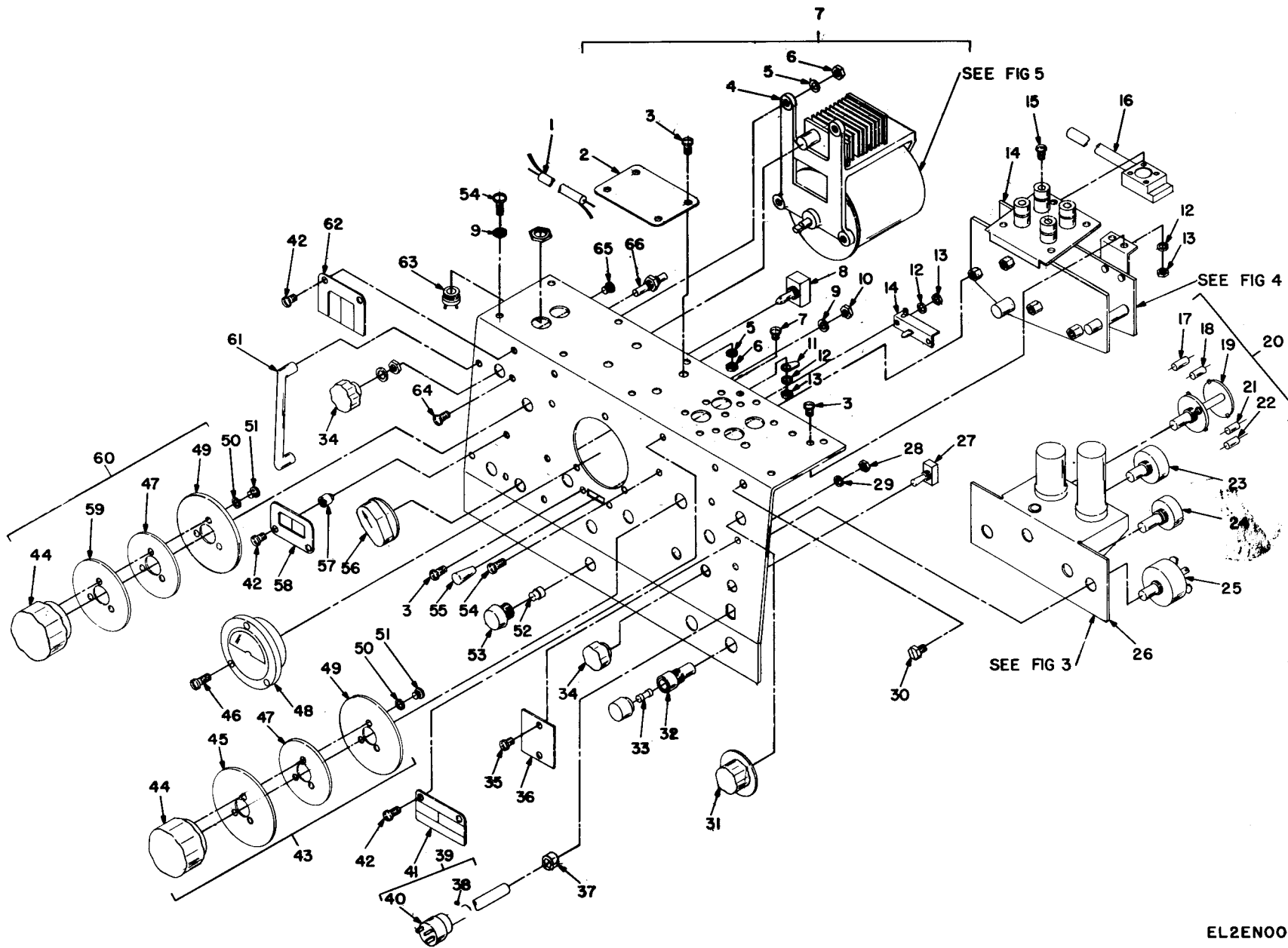


Figure 2. Panel assembly.

EL2EN002

SECTION II (1) ILLUSTRATION		(2)	(3)	TM11-6625-471-24P-4		(5)	(6)	(7)	(8)
(a) FIG NO.	(b) ITEM NO.	SMR CODE	NATIONAL STOCK NUMBER	PART NUMBER	FSCM	DESCRIPTION	USABLE ON CODE	U/M	QTY INC IN UNIT
						GROUP 01 PANEL ASSEMBLY			
2	1	PAHZZ		SMB183588	80063	CABLE SHORT		EA	1
2	2	XDHZZ		SMB183585	80063	PLATE IDENTIFICATION		EA	1
2	3	XDHZZ	5305-00-206-3716	MS35214-25	96906	SCREW MACHINE		EA	4
2	4	XDHHH		SMD183715	80063	OSCILLATOR ASSEMBLY		EA	1
2	5	XDHZZ	5310-00-019-0672	MS35333-107	96906	WASHER LOCK		EA	13
2	6	XDHZZ	5310-00-936-9766	MS35650-305	96906	NUT PLAIN HEX AGON		EA	4
2	7	XDHHH		SMD169326	80063	PANEL SUBASSEMBLY		EA	1
2	8	PAHZZ	5930-00-655-1514	MS35058-22	96906	SWITCH TOGGLE		EA	1
2	9	XDHZZ	5310-00-019-0672	MS35333-107	96906	WASHER LOCK		EA	11
2	11	XDHZZ		SMD169326-11	80063	TERMINALLUG		EA	1
2	12	XDHZZ	5310-00-019-0669	MS35333-105	96906	WASHER LOCK		EA	24
2	13	XDHZZ	5305-00-934-9763	MS35649-265	96906	NUT PLAIN HEX AGON		EA	14
2	14	PAHZZ		SMD169326-7	80063	SWITCH LEVER		EA	1
2	14A	PAHZZ		SMD183697	80063	CAPACITOR ASSEMBLY		EA	1
2	15	XDHZZ		SMB183591	80063	SCREW MACHINE		EA	1
2	16	PAHZZ	6625-00-186-6134	SMC169324	80063	VOLTAGE DIVIDER		EA	1
2	17	PAHZZ		SMB169329	80063	RESISTOR FIXED FILM		EA	4
2	18	PAHZZ		SMB169328	80063	RESISTOR FIXED FILM		EA	2
2	19	PAHZZ		SMA183696	80063	SWITCH ROTARY		EA	1
2	20	XDHHH		SMB183695	80063	SWITCH ASSEMBLY		EA	1
2	21	PAHZZ		RN75B2064F	81349	RESISTOR FIXED FILM		EA	2
2	22	PAHZZ		RN75B3964F	81349	RESISTOR FIXED FILM		EA	2
2	23	PAHZZ		RV4NAYFD502A	81349	RESISTOR VARIABLE		EA	2
2	24	PAHZZ		RA30NAPD102A	81349	RESISTOR VARIABLE		EA	1
2	25	PAHZZ	5905-00-810-2747	RP151FD802KK	81349	RESISTOR VARIABLE		EA	1
2	26	XDHHH		SMD183677	80063	VTVM ASSEMBLY		EA	1
2	27	PAHZZ	5930-00-655-1575	MS35059-22	96906	SWITCH TOGGLE		EA	1
2	28	XDHZZ	5310-00-934-9746	MS35649-245	96906	NUT PLAIN HEX AGON		EA	2
2	29	XDHZZ	5310-00-939-1061	MS35333-104	96906	WASHER LOCK		EA	2
2	30	XDHZZ		SMB183590	80063	FIDUCIARY		EA	1
2	31	PAOZZ		SMB183674	80063	DIAL CONTROL		EA	1
2	32	PAHZZ		SMD169326-2	80063	FUSEHOLDER		EA	2
2	33	PAOZZ		SMD183553-1	80063	FUSE CARTRIDGE		EA	2
2	34	PAOZZ		SMD183553-3	80063	KNOB		EA	6
2	35	XDHZZ	5305-00-637-5884	MS35214-12	96906	SCREW MACHINE		EA	2
2	36	XDHZZ		SMB183567	80063	PLATE CALIBRATION		EA	1
2	37	PAHZZ		SC-B-76686	80063	GROMMET		EA	1
2	38	PAHZZ		CO02MGF2-18-0300	81349	CABLE POWER ELECTRICAL		EA	1

SECTION II (1) ILLUSTRATION				TM11-6625-471-24P-4							
(a) FIG NO.	(b) ITEM NO.	(2) SMR CODE	(3) NATIONAL STOCK NUMBER	(4) PART NUMBER	(5) FSCM	(6) DESCRIPTION	(7) USABLE ON CODE	U/M	(8) QTY INC IN UNIT		
2	39	XDHHH		SMB183568	80063	CABLE ASSEMBLY POWER ELECTRICAL		EA	1		
2	40	XDZZ		U120U	81349	CONNECTOR PLUG ELECTRICAL		EA	1		
2	41	XDZZ		SMB183566	80063	INDICATOR PLATE		EA	1		
2	42	XDZZ	5305-00-954-5640	MS35214-21	96906	SCREW MACHINE		EA	6		
2	43	XDHHH		SMB183670	80063	L-C-DIAL ASSEM BLY		EA	1		
2	44	PAZZ		SMB183673	80063	KNOB		EA	2		
2	45	PAZZ		SMD183667	80063	DIAL L-C		EA	1		
2	46	XDZZ	5305-00-206-2507	MS35215-56	96906	SCREW MACHINE		EA	3		
2	47	XDZZ		SMB183671	80063	PLATE SPACER		EA	2		
2	48	PAHHH	6625-00-697-7821	SMC183586	80063	MULTMETER		EA	1		
2	49	XDZZ		SMB183672	80063	PLATE DRIVE		EA	2		
2	50	XDZZ	5310-00-939-1061	MS35333-104	96906	WASHER LOCK		EA	6		
2	51	XDZZ	5305-00-207-7468	MS35214-16	96906	SCREW MACHINE		EA	6		
2	52	PAZZ		SMD183553-2	80063	LAMP INCANDESCENT		EA	1		
2	53	PAZZ		SMD169326-3	80063	LIGHT INDICATOR		EA	1		
2	54	XDZZ		MS35214-23	96906	SCREW MACHINE		EA	7		
2	54	XDZZ	5305-00-059-8248	MS35230-61	96906	SCREW MACHINE		EA	13		
2	55	PAZZ		SMD183553-5	80063	KNOB		EA	1		
2	56	PAZZ		SMD183553-4	80063	KNOB		EA	2		
2	57	XDZZ		SMB183592	80063	STAND-OFF		EA	6		
2	58	XDZZ		SMB183565	80063	INDICATOR PLATE		EA	1		
2	59	PAZZ		SMD183669	80063	DIAL FREQUENCY		EA	1		
2	60	XDHHH		SMB183668	80063	FREQUENCY DIAL ASSEMBLY		EA	1		
2	61	XDZZ		SMB183584	80063	HANDLE BAIL		EA	2		
2	62	XDZZ		SMB183564	80063	INDICATOR PLATE		EA	1		
2	63	PAZZ	5935-00-192-4789	JJ089	81349	JACK TELEPHONE		EA	2		
2	64	XDZZ		MS35229-64	96906	SCREW MACHINE		EA	4		
2	65	XDZZ	5305-00-958-1001	MS35198-35	96906	SCREW MACHINE		EA	2		
2	66	XDHHH		SMD169326-6	80063	DRIVE UNIT		EA	2		

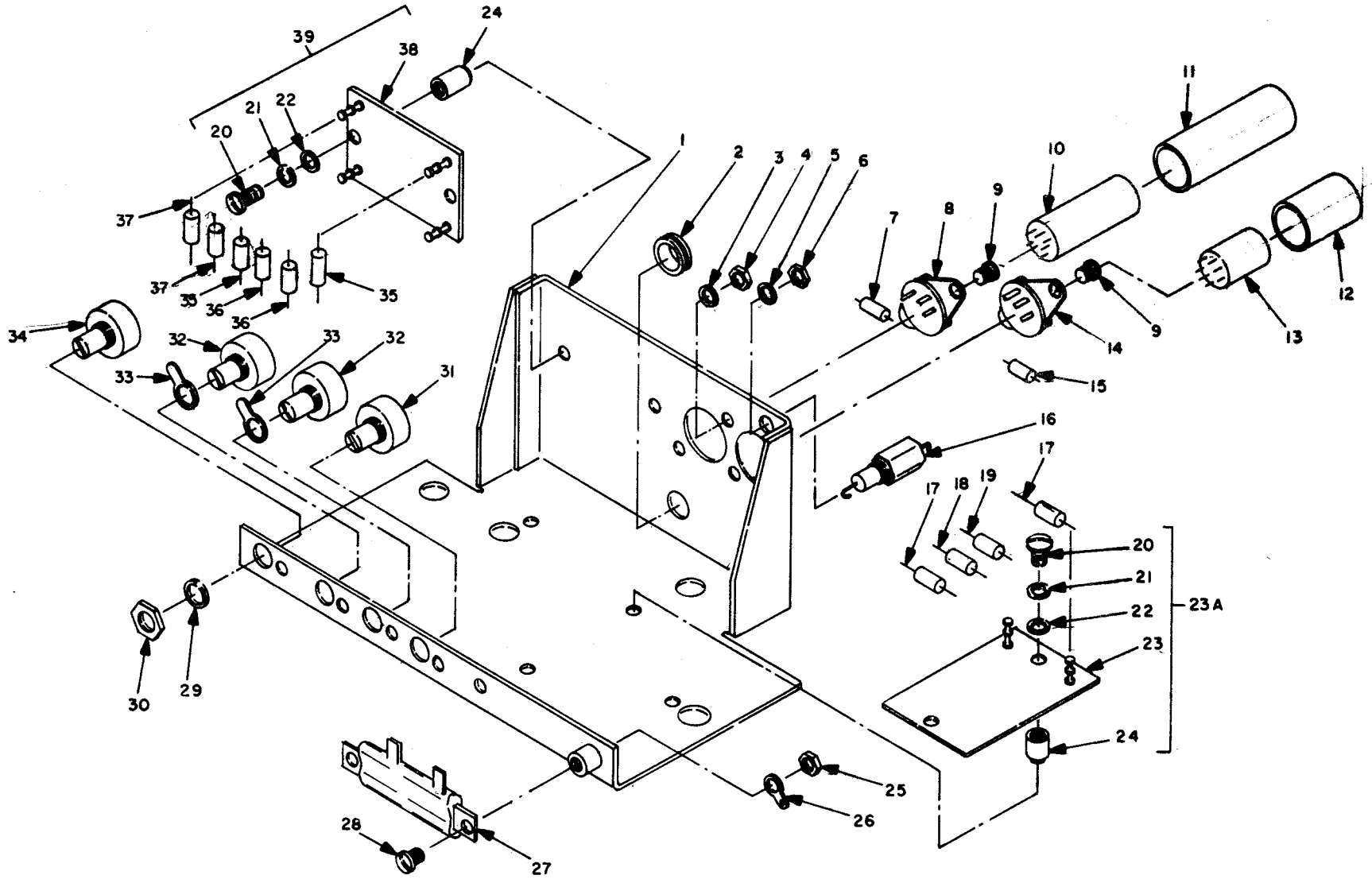
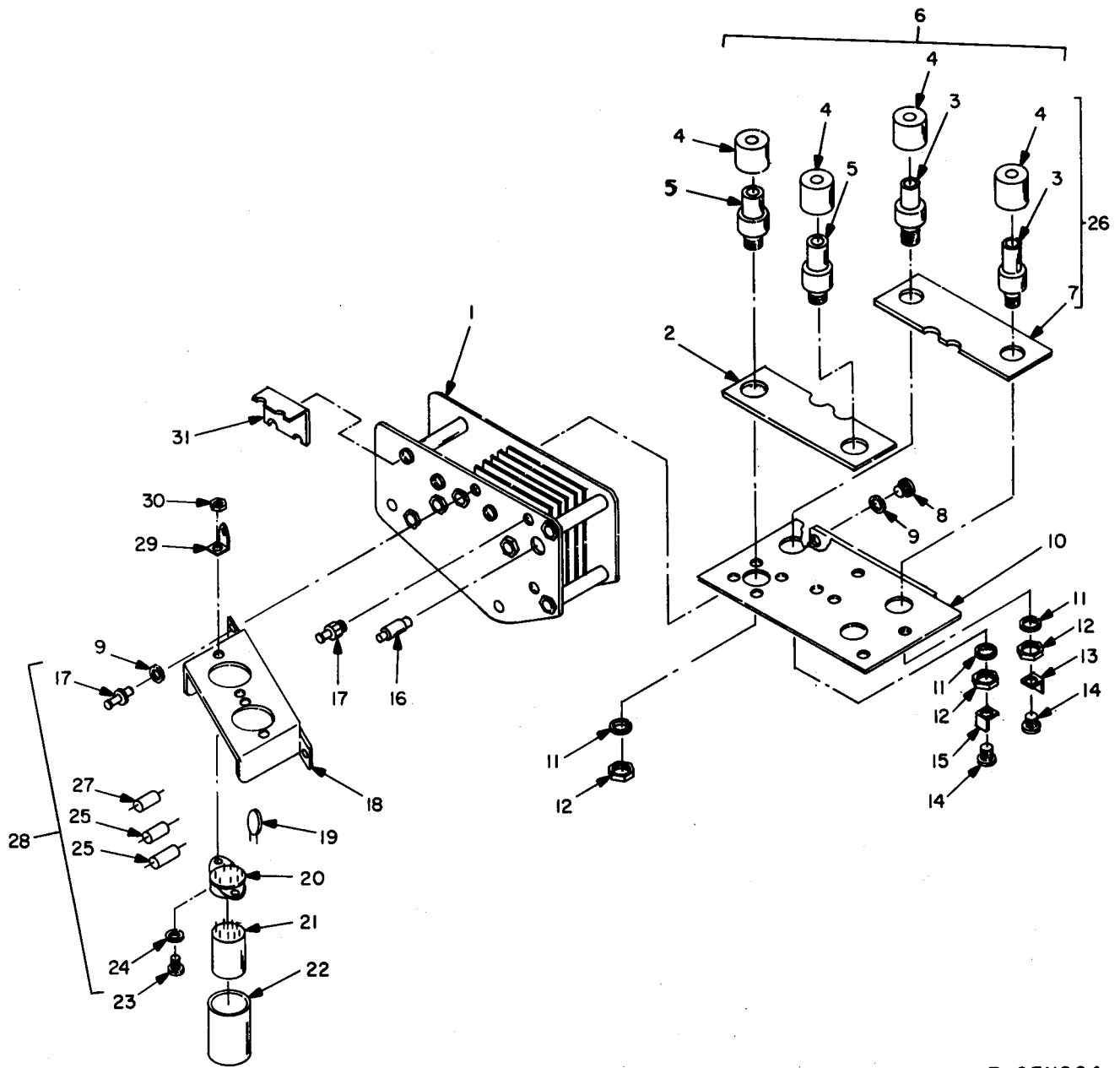


Figure 3. Vtvm assembly.

EL2EN003

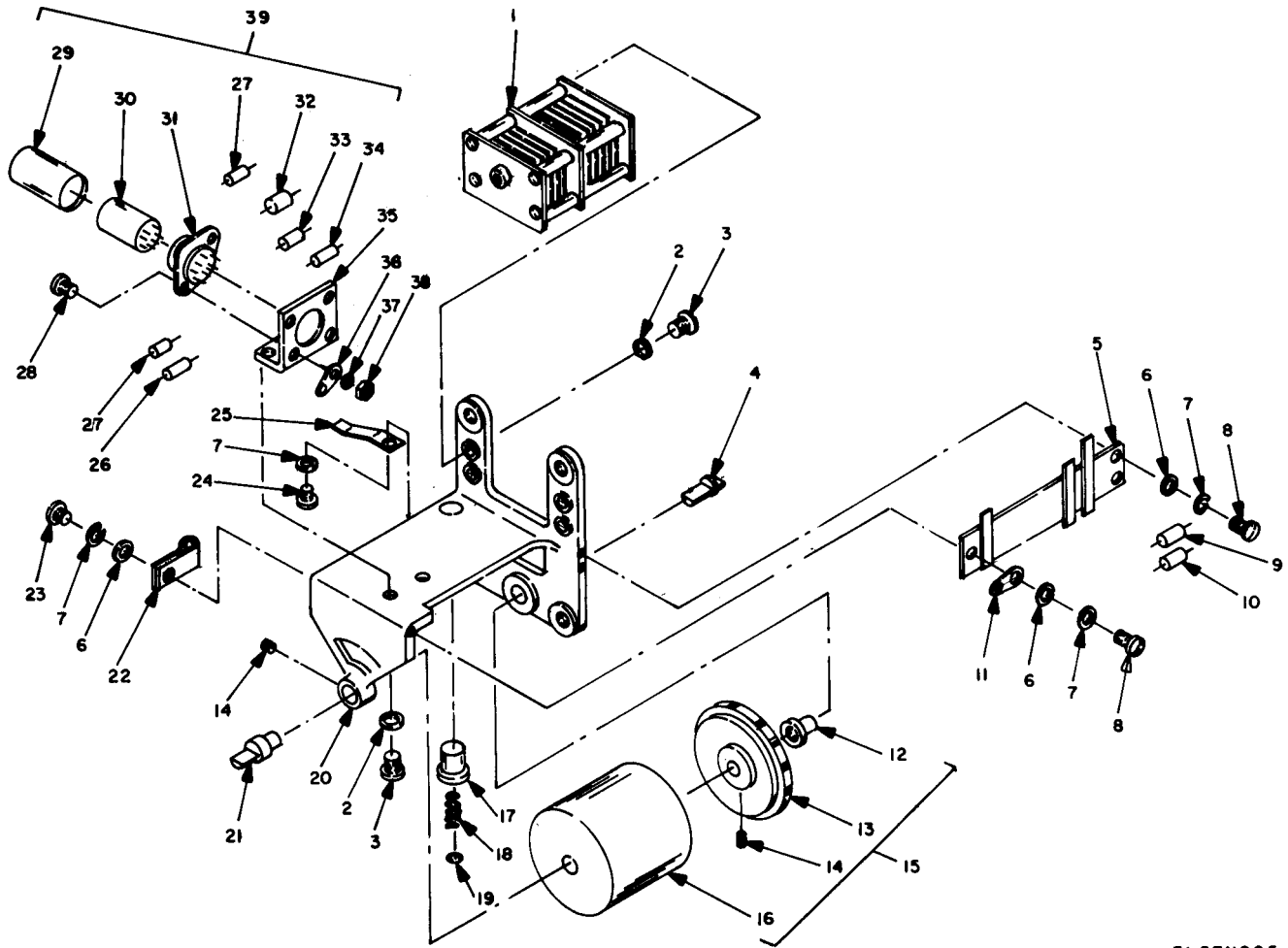
SECTION II (1) ILLUSTRATION				TM11-6625-471-24P-4							
(a) FIG NO.	(b) ITEM NO.	(2) SMR CODE	(3) NATIONAL STOCK NUMBER	(4) PART NUMBER	(5) FSCM	(6) DESCRIPTION	(7) USABLE ON CODE	U/M	(8) QTY INC IN UNIT		
3	1	XDHZZ		SMC183679	80063	CHASSIS VTVM		EA	1		
3	2	PAHZZ		SMD183677-16	80063	GROMMET		EA	1		
3	3	XDHZZ	5310-00-939-1061	MS35333-104	96906	WASHER LOCK		EA	4		
3	4	XDHZZ		MS35609-45	96906	NUT PLAIN HEX AGON		EA	4		
3	5	PAHZZ	5310-00-939-1061	MS35333-104	96906	WASHER LOCK ON		EA	4		
3	6	PAHZZ		MS35609-45	96906	NUT PLAIN HEXAGON		EA	4		
3	7	PAHZZ	5905-00-104-8330	RC20GF333JS	81349	RESISTOR FIXED COMPOSITION		EA	1		
3	8	PAHZZ	5935-00-222-9828	TS103P01	81349	SOCKET ELECTRON TUBE		EA	1		
3	9	XDHZZ	5305-00-637-5884	MS35214-12	96906	SCREW MACHINE		EA	4		
3	10	PAHZZ	5960-00-262-0210	5814A	81349	ELECTRON TUBE		EA	1		
3	11	PAHZZ	5960-00-686-8087	MS24233-5	96906	SHIELD ELECTRON TUBE		EA	1		
3	12	PAHZZ	5960-00-686-8119	MS24233-1	96906	SHIELD ELECTRON TUBE		EA	1		
3	13	PAHZZ		5726-6AL5W	81349	ELECTRON TUBE		EA	1		
3	14	PAHZZ	5935-00-260-0516	TS102P01	81349	SOCKET ELECTRON TUBE		EA	1		
3	15	PAHZZ	5910-00-752-5128	CK27AX102K	81349	CAPACITOR FIXED CERAMIC		EA	1		
3	16	PAHZZ		SMD183677-11	80063	CAPACITOR FIXED CERAMIC		EA	1		
3	17	XDHZZ	5905-00-104-8330	RC20GF333JS	81349	RESISTOR FIXED COMPOSITION		EA	1		
3	18	PAHZZ	5905-00-295-3410	RC20GF473K	81349	RESISTOR FIXED COMPOSITION		EA	1		
3	19	PAHZZ	5905-00-114-5398	RCR20G225JS	81349	RESISTOR FIXED COMPOSITION		EA	1		
3	20	XDHZZ	5305-00-206-3716	MS35214-25	96906	SCREW MACHINE		EA	4		
3	21	XDHZZ	5310-00-019-0669	MS35333-105	96906	WASHER LOCK		EA	4		
3	22	XDHZZ		MS15795-605	96906	WASHER FLAT		EA	4		
3	23	PAHZZ		SMB183683	80063	TERMINAL BOARD		EA	1		
3	23A	PAHZZ		SMB183681	80063	TERMINAL BOARD		EA	1		
3	24	XDHZZ		SMD183677-20	80063	SPACER SLEEVE		EA	2		
3	25	XDHZZ	5310-00-936-9766	MS35650-305	96906	NUT PLAIN HEX AGON		EA	2		
3	26	XDHZZ		SMD183677-18	80063	TERMINAL LUG		EA	1		
3	27	PAHZZ		RW21G312	81349	RESISTOR FIXED WIREWOUND		EA	1		
3	28	XDHZZ	5305-00-206-2507	MS35215-56	96906	SCREW MACHINE		EA	2		
3	29	XDHZZ	5310-00-022-8847	MS35333-110	96906	WASHER LOCK		EA	4		
3	30	XDHZZ		SMD183677-21	80063	NUT PLAIN HEX AGON		EA	4		
3	31	PAHZZ		RV4NATSA103A	81349	RESISTOR VARIABLE		EA	1		
3	32	PAHZZ		RV4NATSA105A	81349	RESISTOR VARIABLE		EA	2		
3	33	XDHZZ		SMD183677-17	80063	TERMINAL LUG		EA	2		
3	34	PAHZZ		RV4NATSA305A	81349	RESISTOR VARIABLE		EA	1		
3	35	PAHZZ	5905-00-192-9260	RC20GF154K	81349	RESISTOR FIXED COMPOSITION		EA	1		
3	36	PAHZZ		CM30B302J	81349	CAPACITOR FIXED MICA		EA	2		
3	37	PAHZZ	5905-00-279-2672	RC20GF182K	81349	RESISTOR FIXED COMPOSITION		EA	1		
3	38	PAHZZ		SMB183682	80063	TERMINAL BOARD		EA	1		
3	39	PAHZZ		SMB183680	80063	TERMINAL BOARD		EA	1		



EL2EN004

Figure 4. Capacitor assembly.

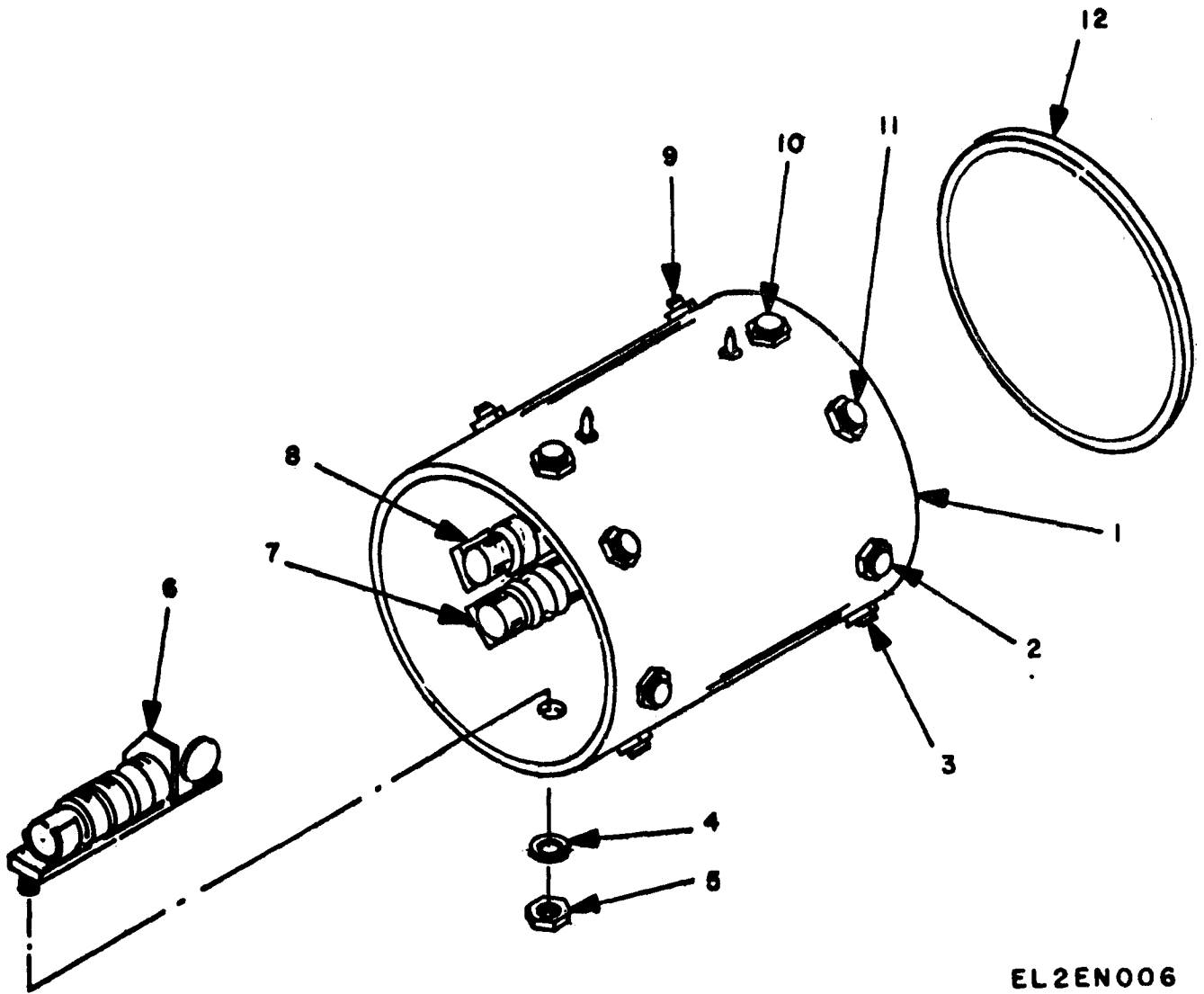
SECTION II (1) ILLUSTRATION		TM11-6625-471-24P-4					(7)	(8)	
(a) FIG NO.	(b) ITEM NO.	(2) SMR CODE	(3) NATIONAL STOCK NUMBER	(4) PART NUMBER	(5) FSCM	(6) DESCRIPTION	USABLE ON CODE	U/M	QTY INC IN UNIT
4	1	PAHZZ		SMC183702	80063	CAPACITOR AIR DIELECTRIC		EA	1
4	2	XDHZZ		SMB183708	80063	INSULATOR PLATE		EA	1
4	3	XDHZZ		SMB183704	80063	BASE POST		EA	3
4	4	XDHZZ		SMB183706	80063	CAP POST		EA	4
4	5	XDHZZ		SMB183705	80063	BASE POST		EA	2
4	6	XDHHH		SMB183700	80063	INSULATOR ASSEMBLY		EA	1
4	7	XDHZZ		SMB183707	80063	INSULATOR PLATE		EA	1
4	8	XDHZZ	5305-00-059-8248	MS35214-23	96906	SCREW MACHINE		EA	3
4	9	XDHZZ	5310-00-019-0669	MS35333-105	96906	WASHER LOCK		EA	2
4	9A	XDHZZ	5310-00-939-1061	MS35333-104	96906	WASHER LOCK		EA	2
4	10	XDHZZ		SMB183709	80063	PLATE MOUNTING		EA	1
4	11	XDHZZ	5310-00-022-8847	MS35333-110	96906	WASHER LOCK		EA	3
4	12	XDHZZ		MS25082B7	96906	NUT PLAIN HEX AGON		EA	
4	13	XDHZZ		SMB183703-1	80063	STRAP		EA	1
4	14	XDHZZ	5305-00-637-5884	MS35214-12	96906	SCREW MACHINE		EA	2
4	15	XDHZZ		SMB183703-2	80063	STRAP		EA	1
4	16	PAHZZ		CK26W102Z	81349	CAPACITOR FIXEDCERAMIC		EA	1
4	17	XDHZZ		SMD183697-2	80063	STANDOFF		EA	2
4	18	XDHZZ		SMB183699	80063	BRACKET TUBE		EA	1
4	19	PAHZZ		CK63V103Z	81349	CAPACITOR FIXEDCERAMIC		EA	1
4	20	PAHZZ	5935-00-260-0516	TS102P01	81349	SOCKET ELECTRON TUBE		EA	2
4	21	PAOZZ		5726-6AL5W	81349	ELECTRON TUBE		EA	2
4	22	XDHZZ		TS102U01	81349	SHIELD ELECTRON TUBE		EA	2
4	23	XDHZZ		MS35229-3	96906	SCREW MACHINE		EA	4
4	24	XDHZZ	5310-00-939-1061	MS35333-104	96906	WASHER LOCK		EA	1
4	25	PAHZZ		CK27W102Z	81349	CAPACITOR FIXEDCERAMIC		EA	2
4	26	XDHZZ		SMB183701	80063	INSULATOR ASSEMBLY		EA	1
4	27	PAHZZ	5905-00-114-5398	RCR20G225JS	81349	RESISTOR FIXED COMPOSITION		EA	1
4	28	XDHHH		SMB183698	80063	BRACKET ASSEMBLY		EA	1
4	29	XDHZZ		SMB183698-6	80063	TERMINAL LUG		EA	2
4	30	XDHZZ	5310-00-934-9746	MS35649-245	96906	NUT PLAIN HEX AGON		EA	4
4	31	XDHZZ		SMB169323	80063	BRACKET SUPPORT		EA	1



EL2EN005

Figure 5. Oscillator assembly.

SECTION II (1) ILLUSTRATION		(2)	(3)	TM11-6625-471-24P-4		(6)	(7)	(8)
(a) FIG NO.	(b) ITEM NO.	SMR CODE	NATIONAL STOCK NUMBER	PART NUMBER	FSCM	DESCRIPTION	USABLE ON CODE U/M	QTY INC IN UNIT
5	1	PAHZZ		SMB183717	80063	CAPACITOR VARIABLE	EA	1
5	2	XDHZZ	5310-00-019-0670	MS35333-106	96906	WASHER LOCK	EA	4
5	3	XDHZZ	5305-00-637-1124	MS35214-40	96906	SCREW MACHINE	EA	4
5	4	XDHZZ		SMB183726	80063	SHAFT STRAIGHT	EA	1
5	5	XDHZZ		SMB183730	80063	TERMINAL STRIP	EA	1
5	6	XDHZZ		MS15795-605	96906	WASHER FLAT	EA	4
5	7	XDHZZ	5310-00-019-0669	MS35333-105	96906	WASHER LOCK	EA	8
5	8	XDHZZ	5305-00-638-0502	MS35214-28	96906	SCREW MACHINE	EA	4
5	9	PAHZZ		RU4B201J	81349	RESISTOR FIXED COMPOSITION	EA	1
5	10	PAHZZ		CM30BD302JN	81349	CAPACITOR FIXEDMICA	EA	1
5	11	XDHZZ		SMD183715-8	80063	TERMINAL LUG	EA	1
5	12	XDHZZ		SMB183727	80063	BUSHING SLEEVE	EA	1
5	13	XDHZZ		SMB183722	80063	PLATE INDEX	EA	1
5	14	XDHZZ		SMC183720-2	80063	SET SCREW	EA	1
5	14A	XDHZZ		SMD173715-7	80063	SET SCREW	EA	1
5	15	XDHHH		SMC183720	80063	DETENT ASSEMBLY	EA	1
5	16	XDHHH		SMC183735	80063	TURRET ASSEMBLY	EA	1
5	17	XDHZZ		SMB183729	80063	RETAINER BALL	EA	1
5	18	PAHZZ	5360-00-057-9540	SMB183728	80063	SPRING HELICAL COMPRESSION	EA	1
5	19	PAHZZ	3110-00-057-9542	SMC183720-1	80063	BEARING BALL	EA	1
5	20	XDHZZ		SMD183721	80063	SUPPORT OSCILLATOR	EA	1
5	21	XDHZZ		SMB183716	80063	SHAFT STRAIGHT	EA	1
5	22	XDHZZ		SMD183715-5	80063	CLAMP LOOP	EA	4
5	23	XDHZZ	5305-00-206-3716	MS35214-25	96906	SCREW MACHINE	EA	4
5	24	XDHZZ	5305-00-059-8249	MS35214-24	96906	SCREW MACHINE	EA	4
5	25	XDHZZ		SMB183725	80063	WIPER	EA	2
5	26	PAHZZ	5910-00-101-4708	CM20C240J	81349	CAPACITOR FIXEDMICA	EA	1
5	27	PAHZZ		CK27W102Z	81349	CAPACITOR FIXEDCERAMIC	EA	1
5	28	XDHZZ	5305-00-637-5884	MS35214-12	96906	SCREW MACHINE	EA	4
5	29	PAHZZ	5960-00-725-0527	MS24232-6	96906	SHIELD ELECTRON TUBE	EA	1
5	30	PAHZZ	5960-00-188-3915	5763	81349	ELECTRON TUBE	EA	1
5	31	PAHZZ	5935-00-222-9828	TS103P01	81349	SOCKET ELECTRON TUBE	EA	4
5	32	PAHZZ		CP04A3EC223K	81349	CAPACITOR FIXEDPAPER	EA	1
5	33	PAHZZ	5905-00-192-3987	RC20GF104K	81349	RESISTOR FIXED COMPOSITION	EA	1
5	34	PAHZZ	5905-00-106-1247	RCR32G221JS	81349	RESISTOR FIXED COMPOSITION	EA	1
5	35	XDHZZ		SMB183719	80063	BRACKET TUBE	EA	1
5	36	XDHZZ		SMB183718-7	80063	TERMINAL LUG	EA	4
5	37	XDHZZ	5310-00-939-1061	MS35333-104	96906	WASHER LOCK	EA	4
5	38	XDHZZ	5310-00-934-9746	MS35649-245	96906	NUT PLAIN HEX AGON	EA	4
5	39	XDHHH		SMB183718	80063	OSCILLATOR ASSEMBLY	EA	1



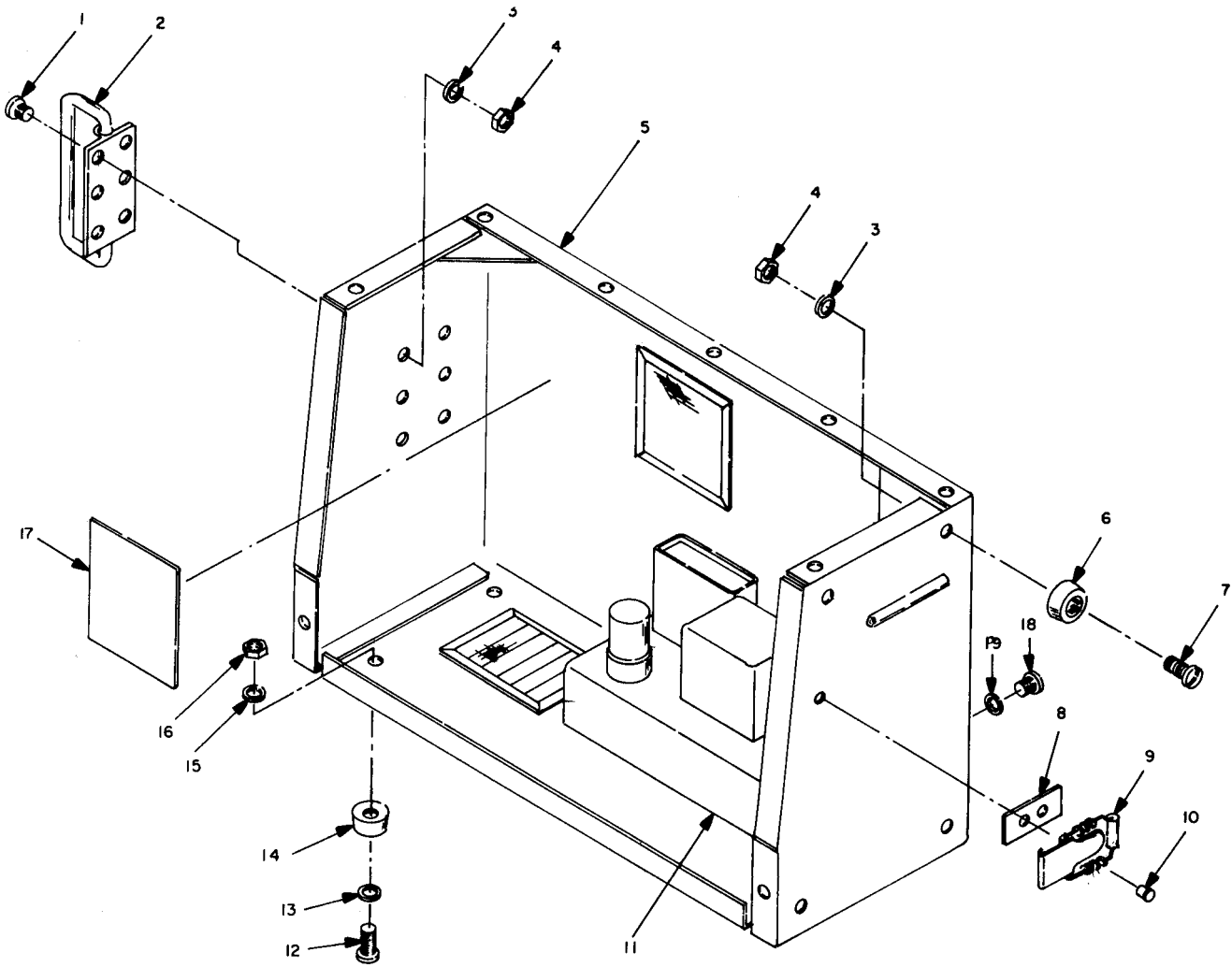
EL2EN006

Figure 6. Turret assembly.

SECTION II

TM11-6625-471-24P-4

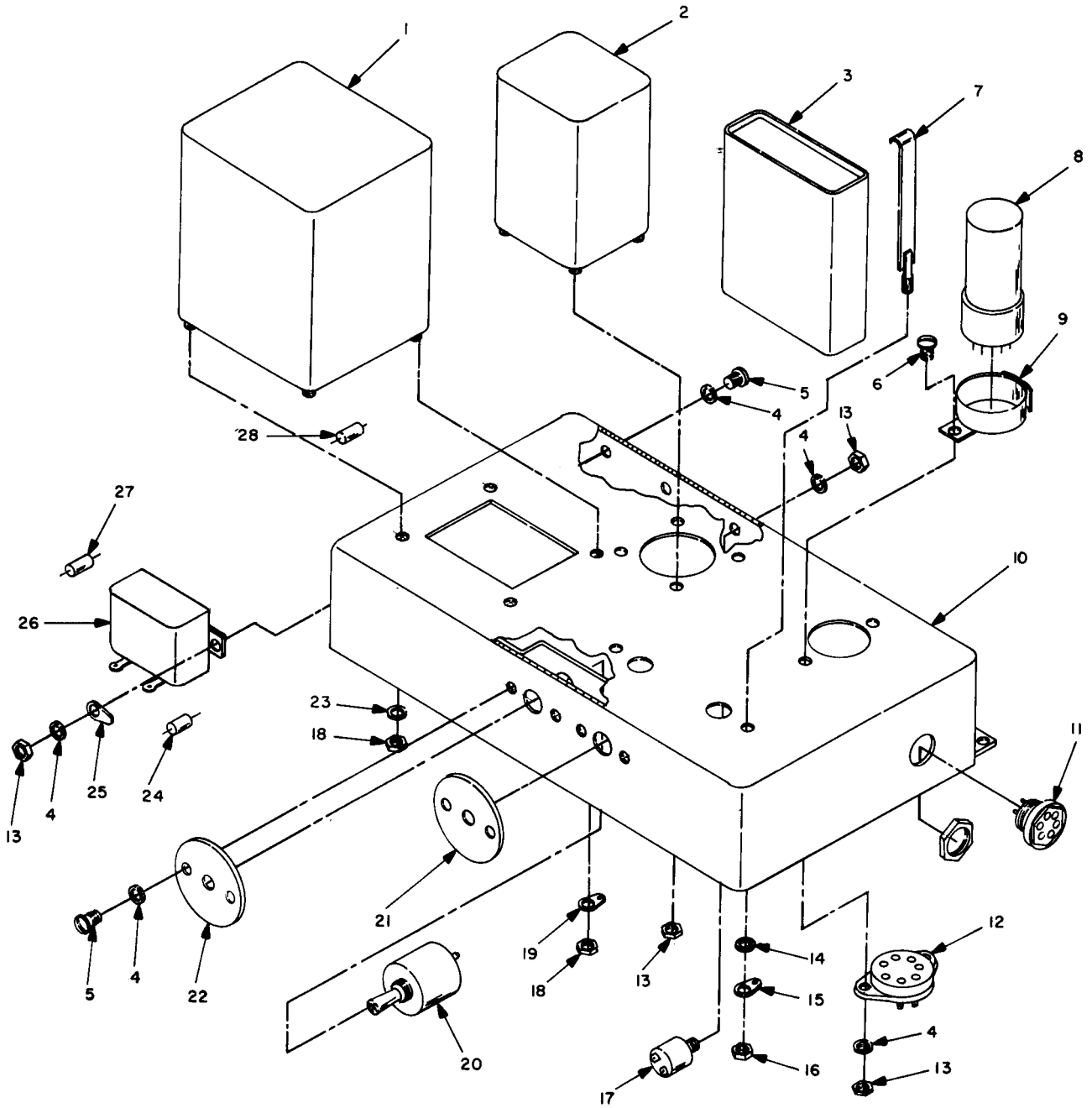
(1) LLUST FIG NO.	(2) NON TEM NO.	(3) SMR CODE	(4) NATIONAL STOCK NUMBER	(5) PART NUMBER	(6) FSCM	(7) DESCRIPTION	(8) QTY INC IN UNIT
6	1	XDNZZ		SMB183737	80063	HOUSING COIL	EA 1
6	2	PAHZZ	5950-00-567-8301	SMC183739	80063	TRANSFORMER RADIO FREQUENCY	EA 1
6	3	PAHZZ		SMC183740	80063	TRANSFORMER RADIO FREQUENCY	EA 1
6	4	XDNZZ	5310-00-019-0669	MS35333-105	96906	WASHER LOCK	EA 16
6	5	XDNZZ	5305-00-934-9763	MS35649-265	96906	NUT P LAIN HEX AGON	EA 16
6	6	PAHZZ		SMC183741	80063	TRANSFORMER RADIO FREQUENCY	EA 1
6	7	PAHZZ		SMC183742	80063	TRANSFORMER RADIO FREQUENCY	EA 1
6	8	PAHZZ		SMC183743	80063	TRANSFORMER RADIO FREQUENCY	EA 1
6	9	PAHZZ		SMC183744	80063	TRANSFORMER RADIO FREQUENCY	EA 1
6	10	PAHZZ		SMC183745	80063	TRANSFORMER RADIO FREQUENCY	EA 1
6	11	PAHZZ	5950-00-698-5212	SMC183746	80063	TRANSFORMER RADIO FREQUENCY	EA 1
6	12	XDNZZ		SMB183736	80063	COVER PLATE	EA 1



EL 2EN007

Figure 7. Case assembly.

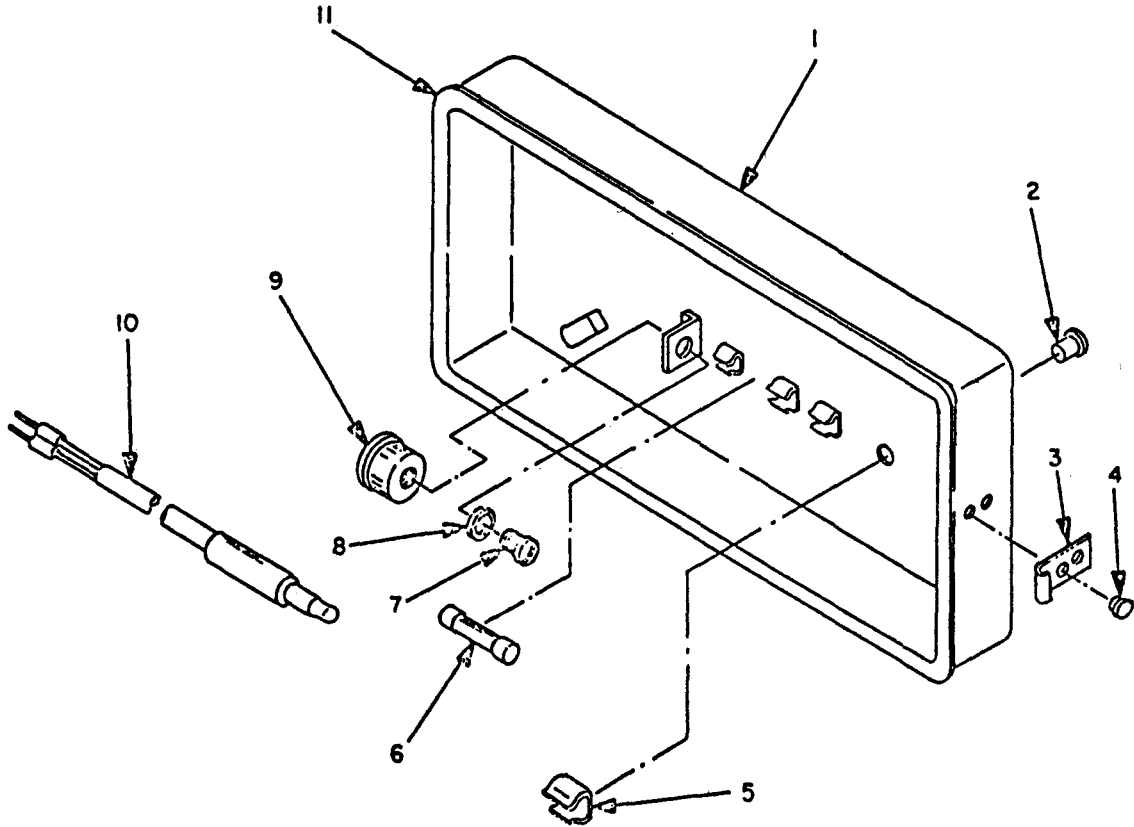
SECTION II (1) ILLUSTRATION		(2)	(3)	TM11-6625-471-24P-4 (4)	(5)	(6)	(7)	(8)
(a) FIG NO.	(b) ITEM NO.	SMR CODE	NATIONAL STOCK NUMBER	PART NUMBER	FSCM	DESCRIPTION	USABLE ON CODE U/M	QTY INC IN UNIT
						GROUP 0101 CASE ASSEMBLY		
7	1	XDHZZ	5305-00-206-3716	MS35214-25	96906	SCREW MACHINE	EA	6
7	2	XDHZZ		SMD183552-1	80063	HANDLE BAIL	EA	2
7	3	XDHZZ	5310-00-019-0669	MS35333-105	96906	WASHER LOCK	EA	10
7	4	XDHZZ	5305-00-934-9763	MS35649-265	96906	NUT PLAIN HEXAGON	EA	10
7	5	XDHZZ		SMD183561	80063	CASE METER	EA	1
7	6	PAHZZ		SMD183552-2	80063	BUMPER RUBBER	EA	4
7	7	XDHZZ	5305-00-637-1125	MS35214-29	80063	SCREW MACHINE	EA	4
7	8	PAHZZ	5340-00-355-9839	SCB20651-2	80063	RETAINER CATCH	EA	2
7	9	PAHZZ	5340-00-205-5159	SCD20648	80063	CATCH LUGGAGE	EA	2
7	10	XDHZZ		SMD183552-4	80063	RIVET SOLID	EA	4
7	11	XDHZZ		SMD183562	80063	POWER SUPPLY	EA	1
7	12	XDHZZ	5305-00-637-1123	MS35214-42	96906	SCREW MACHINE	EA	4
7	13	XDHZZ		MS15795-607	96906	WASHER FLAT	EA	4
7	14	PAHZZ		SMD183552-3	80063	BUMPER RUBBER	EA	4
7	15	XDHZZ	5310-00-019-0670	MS35333-106	96906	WASHER LOCK	EA	4
7	16	XDHZZ	5310-00-974-7662	MS35649-286	80063	NUT PLAIN HEXAGON	EA	4
7	17	XDHZZ		SMD183550	80063	CIRCUIT LABEL	EA	1
7	18	XDHZZ	5305-00-206-2508	MS35215-53	96906	SCREW MACHINE	EA	4
7	19	XDHZZ	5310-00-019-0672	MS35333-107	96906	WASHER LOCK	EA	4



EL2EN015

Figure 8. Power supply.

SECTION II (1) ILLUSTRATION				TM11-6625-471-24P-4							
(a) FIG NO.	(b) ITEM NO.	(2) SMR CODE	(3) NATIONAL STOCK NUMBER	(4) PART NUMBER	(5) FSCM	(6) DESCRIPTION	(7) USABLE ON CODE	U/M	(8) QTY INC IN UNIT		
8	1	PAHZZ		SMB183577	80063	TRANSFORMER POWER STEP-UP		EA	1		
8	2	PAHZZ		SMB183578	80063	REACTOR		EA	1		
8	3	PAHZZ		CP70B1FF805K	81349	CAPACITOR FIXEDPAPER DIELECTRICAL		EA	1		
8	4	XDHZZ	5310-00-019-0669	MS35333-105	96906	WASHER LOCK		EA	REF		
8	5	XDHZZ	5305-00-059-8248	MS35214-23	96906	SCREW MACHINE		EA	1		
8	6	XDHZZ	5305-00-638-0502	MS35214-28	96906	SCREW MACHINE		EA	1		
8	7	XDZZ		CP07SC2	81349	BRACKET CAPACI TOR		EA	2		
8	8	PAHZZ		543GTA	81349	ELECTRON TUBE		EA	1		
8	9	XDHZZ		SMD183562-12	80063	CLAMP TUBE		EA	1		
8	10	XDHHH		SMC183576	80063	CHASSIS ASSEMBLY		EA	1		
8	11	PAHZZ		SMD183562-11	80063	CONNECTOR RECEPTACLE ELECTRICAL		EA	1		
8	12	PAHZZ	5935-00-160-1364	TS101C01	81349	SOCKET ELECTRON TUBE		EA	1		
8	13	XDHZZ	5305-00-934-9763	MS35649-265	96906	NUT PLAIN HEX AGON		EA	9		
8	14	XDHZZ	5305-00-019-0672	MS35333-107	96906	WASHER LOCK		EA	1		
8	15	XDHZZ		SMD183562-15	80063	TERMINAL LUG		EA	1		
8	16	XDHZZ	5310-00-934-9764	MS35649-205	96906	NUT PLAIN HEX AGON		EA	2		
8	17	PAHZZ		SMD183562-10	80063	RECTIFIER METALLIC		EA	1		
8	18	XDHZZ	5310-00-974-9762	MS35649-286	96906	NUT PLAIN HEX AGON		EA	4		
8	19	XDHZZ		SMD183562-16	80063	TERMINAL LUG		EA	1		
8	20	PAHZZ		SMD183562-9	80063	SWITCH TOGGLE		EA	2		
8	20	PAHZZ		SMD183562-9	80063	SWITCH TOGGLE		EA	2		
8	21	XDHZZ		SMB183579	80063	PLATE LOCK		EA	1		
8	22	XDHZZ		SMB183580	80063	PLATE LOCK		EA	1		
8	23	XDHZZ	5310-00-019-0670	MS35333-106	96906	WASHER LOCK		EA	3		
8	24	PAHZZ	5905-00-279-2672	RC20GF182K	81349	RESISTOR FIXED COMPOSITION		EA	1		
8	25	XDHZZ		SMD183562-14	80063	TERMINAL LUG		EA	2		
8	26	PAHZZ		CE638B100N	81349	CAPACITOR FIXEDELECTROLYTIC		EA	1		
8	27	PAHZZ	5905-00-114-5441	RCR20G563JS	81349	RESISTOR FIXED COMPOSITION		EA	1		
8	28	PAHZZ	5905-00-295-3410	RC20GF473K	81349	RESISTOR FIXED COMPOSITION		EA	1		

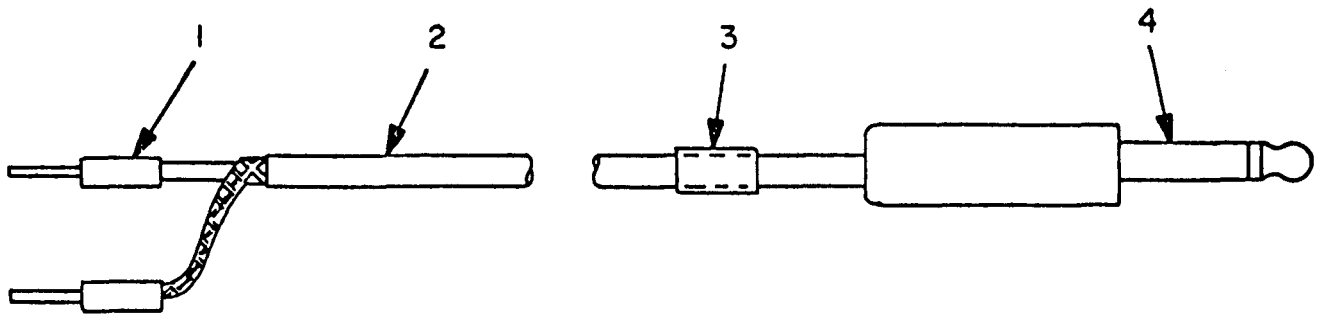


EL2FN00R

Figure 9. Cover assembly.

SECTION II

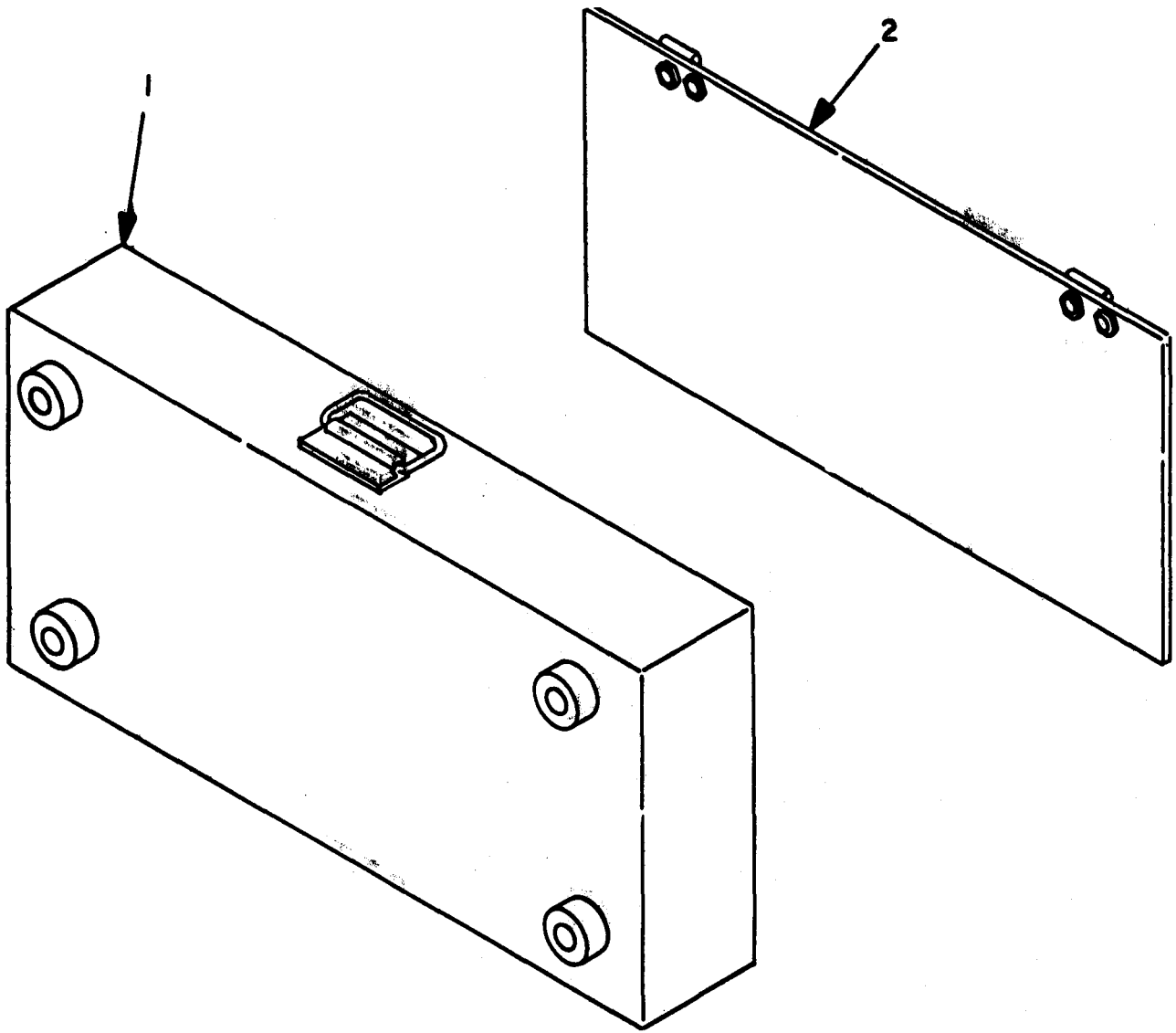
(1) ILLUSTRATION (a) FIG. NO.	(2) ITEM NO.	(3) SMR CODE	(4) NATIONAL STOCK NUMBER	(5) PART NUMBER	(6) FSCM	(7) DESCRIPTION USABLE ON CODE	(8) QTY INC IN UNIT
GROUP 0102 COVER ASSEMBLY							
9	1	XDMZZ		SMC183554	80063	COVER METER	EA 1
9	2	XDMZZ		SMC183551-4	80063	RIVET SOLID	EA 4
9	3	XDMZZ		SMB183559	80063	STRIKE CATCH	EA 2
9	4	XDMZZ		AN430AD4-3	88044	RIVET SOLID	EA 4
9	5	PAHZZ	9999-00-244-5391	SMC183551-2	80063	CLIP ELECTRICAL	EA 4
9	6	PAQZZ		SMC183551-3	80063	FUSE CARTRIDGE	EA 2
9	7	XDMZZ	5305-00-206-3716	MS352 14-25	96906	SCREW MACHINE	EA 1
9	8	XDMZZ	5310-00-019-0669	MS35333-105	96906	WASHER LOCK	EA 1
9	9	PAHZZ		SMC183551-1	80063	CONNECTOR RECEPTACLE ELECTRICAL	EA 1
9	10	XDMZZ		SMC183556	80063	CABLE ASSEMBLY RADIO FREQUENCY	EA 1
9	11	PAHZZ	9390-00-065-5425	SMB183555	80063	GASKET	EA 1



EL2EN009

Figure 10. Cable Assembly Rf CG-1432/U.

(1) ILLUSTRATION FIG NO.	(2) ITEM NO. FEM NO.	(3) SMR CODE	(4) NATIONAL STOCK NUMBER	(5) PART NUMBER	(6) FSCM	(7) DESCRIPTION USABLE ON CODE	(8) QTY INC IN UNIT
GROUP 010201 CABLE ASSEMBLY							
10	1	XDMZZ		SMC183556-3	80063	PIN PLUG	EA 2
10	2	PAHZZ	6145-00-542-6092	RG58CU	81349	CABLE RADIO FREQUENCY	EA 1
10	3	XDMZZ		SCA21825-2	80063	BAND MARKER CABLE	EA 1
10	4	PAHZZ		PJ055	81349	JACK TELEPHONE	EA 1



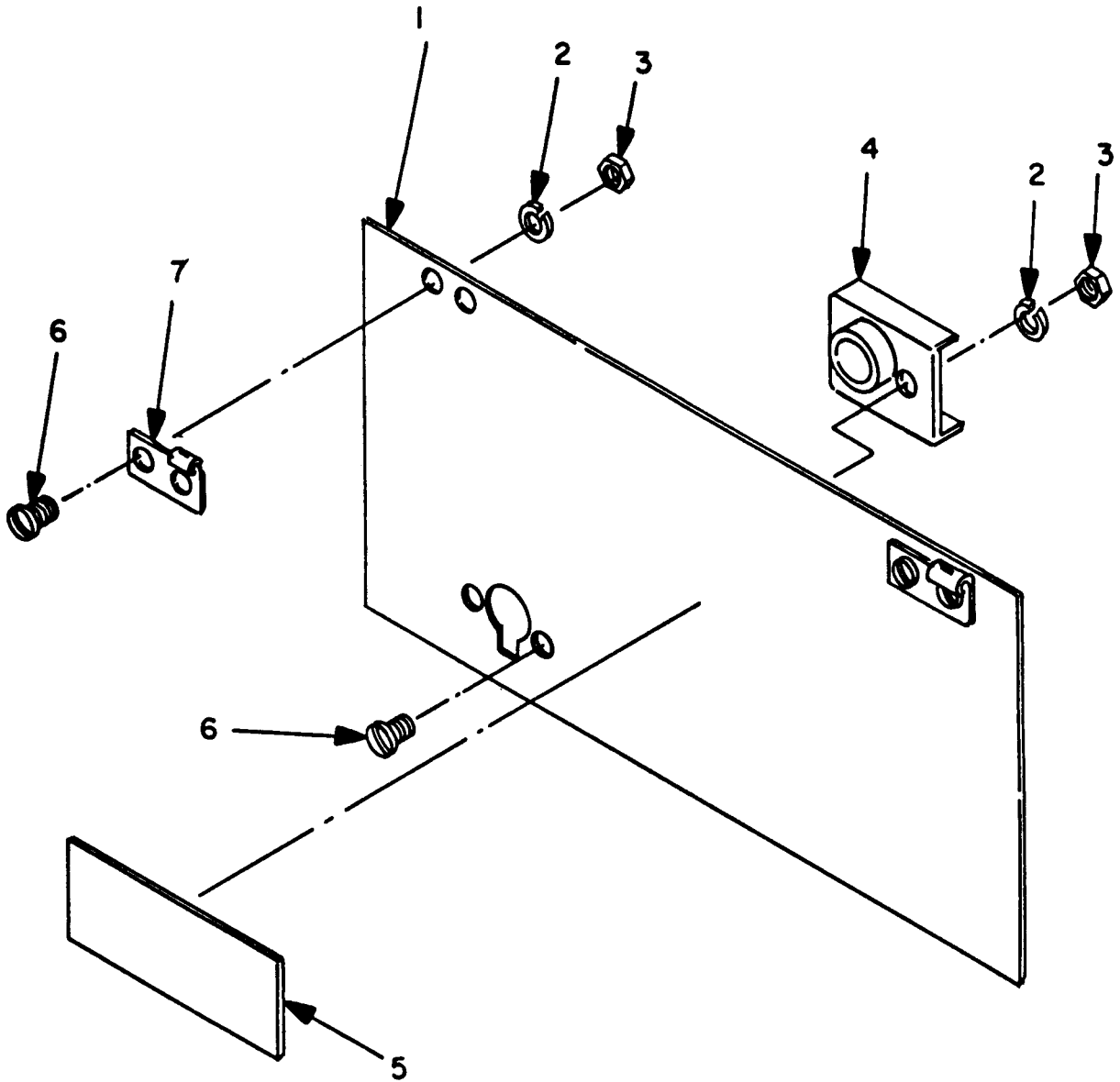
EL2ENO10

Figure 11. Accessory case assembly.

SECTION II

TM11-6625-471-24P-4

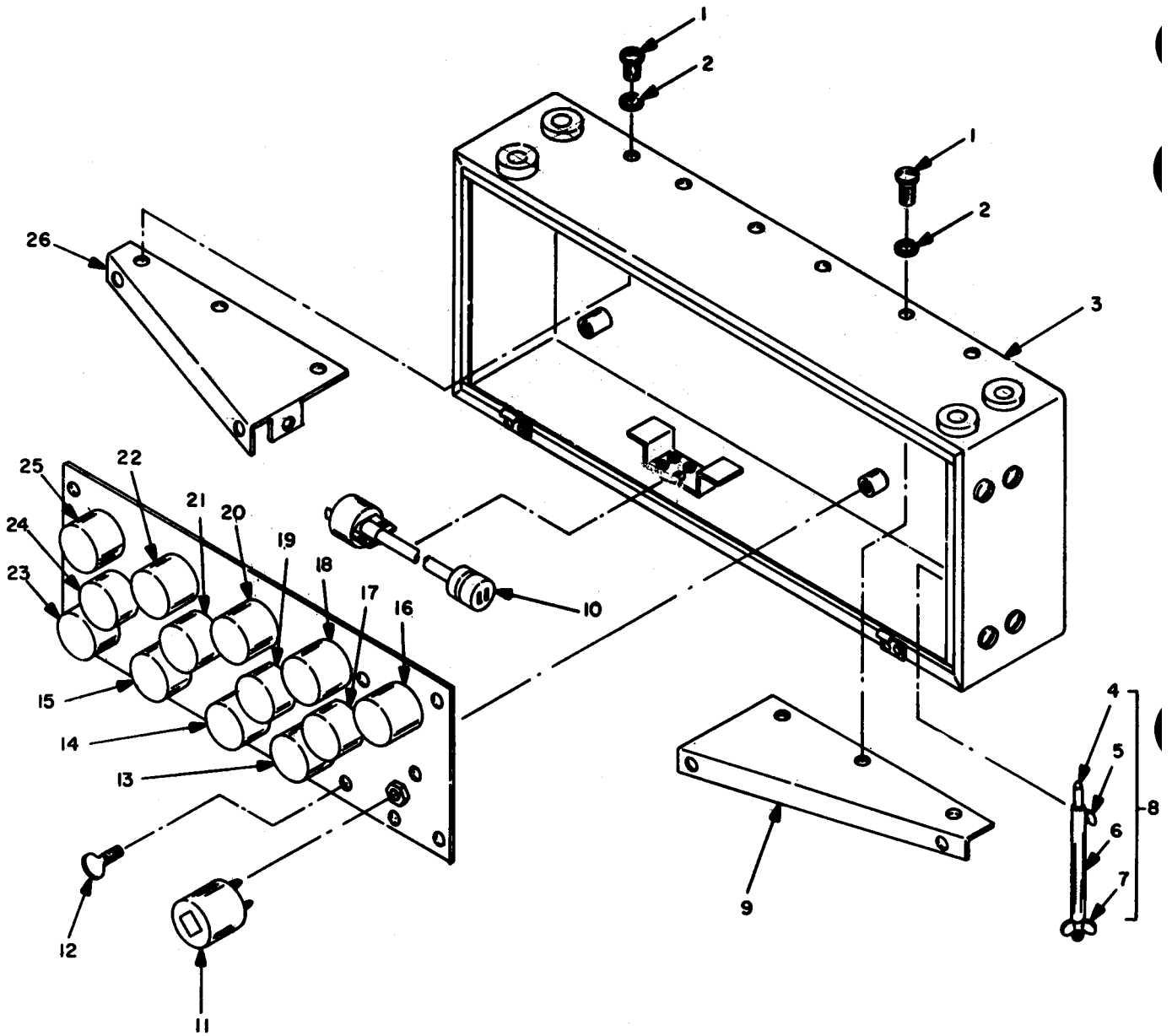
(1) ILLUSTRATION		(2)	(3)	(4)	(5)	(6)	(7)	(8)
(a) FIG NO.	(b) ITEM NO.	SMP CODE	NATIONAL STOCK NUMBER	PART NUMBER	FSCM	DESCRIPTION USABLE ON CODE	U/M	QTY INC IN UNIT
GROUP 02 CASE ACCESSORY								
11	1	XDHWH		MD103474	80063	BODY ASSEMBLY	EA	1
11	2	XDHWH		MD103473	80063	COVER ASSEMBLY	EA	1



EL2EN011

Figure 12. Cover assembly.

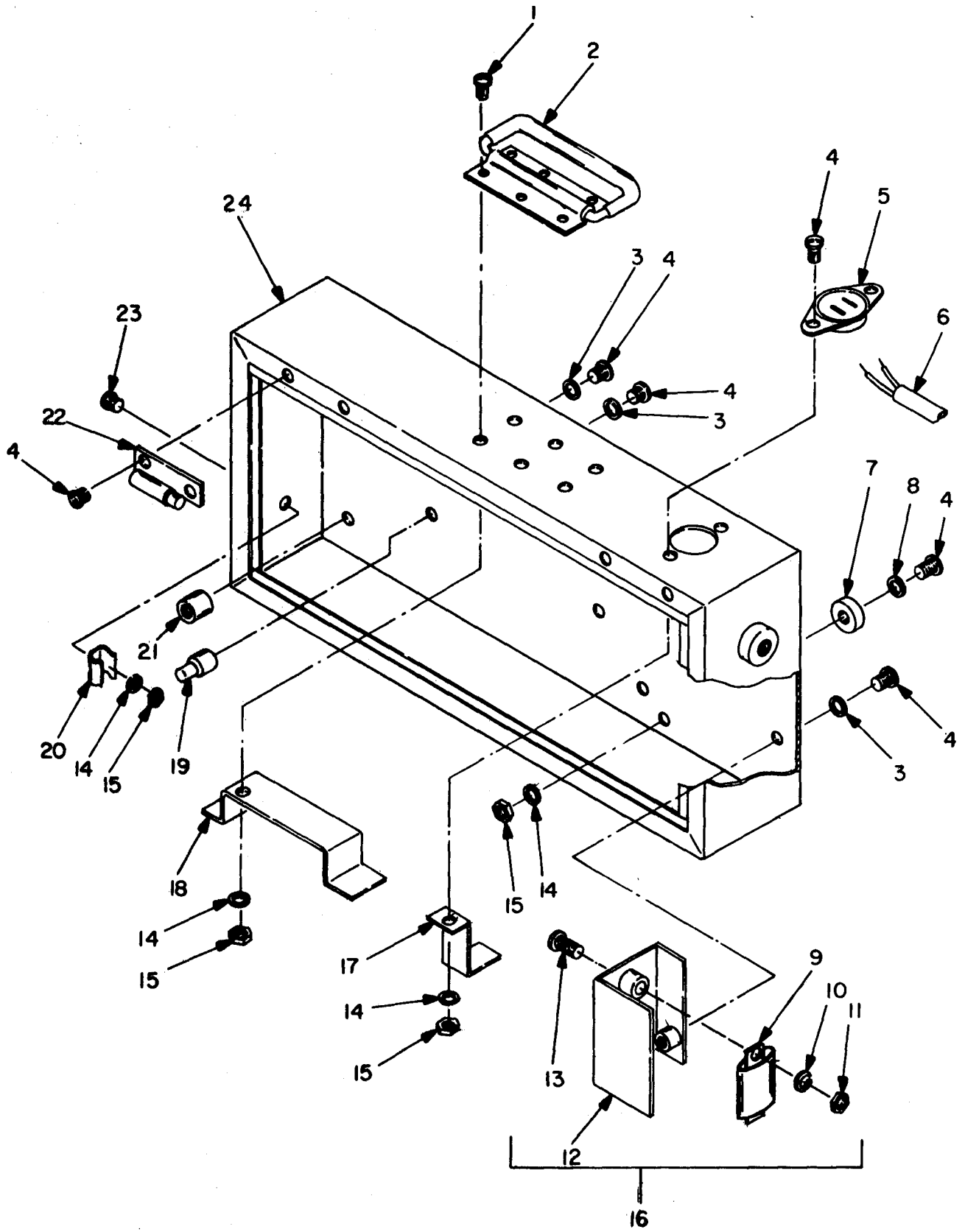
(1) ILLUSTRATION (a) FIG NO.	(2) ITEM NO.	(3) SMR CODE	(3) NATIONAL STOCK NUMBER	(4) PART NUMBER	(5) FSCM	(6) DESCRIPTION	(7) USABLE ON CODE	(7) U/N	(8) QTY INC IN UNIT
12	1	XDHZZ		SMC183475	80063	COVER CASE		EA	1
12	2	XDHZZ	5310-00-019-0669	MS35333-105	96906	WASHER LOCK		EA	8
12	3	XDHZZ	5305-00-934-9763	MS35649-265	96906	NUT PLAIN HEXAGON		EA	8
12	4	XDHZZ		SMC183473-1	80063	CATCH		EA	2
12					80063	PLATE INSTRUCTION		EA	1
12					96906	SCREW MACHINE		EA	8
12					80063	COVER CASE		EA	1



EL2EN013

Figure 13. Case assembly.

SECTION II (1) ILLUSTRATION		(2)	(3)	TM11-6625-471-24P-4 (4)	(5)	(6)	(7)	(8)
(a) FIG NO.	(b) ITEM NO.	SMR CODE	NATIONAL STOCK NUMBER	PART NUMBER	FSCM	DESCRIPTION	USABLE ON CODE U/M	QTY INC IN UNIT
13	1	XDHZZ	5305-00-206-3716	MS35214-25	96906	SCREW MACHINE	EA	6
13	2	XDHZZ	5310-00-019-0669	MS35333-105	96906	WASHER LOCK	EA	6
13	3	XDHHH		SMD183478	80063	CASE ASSEMBLY	EA	1
13	4	XDHZZ		SMB183492	80063	ROD	EA	2
13	5	XDHZZ		SMB183479-1	80063	THUMB SCREW	EA	2
13	6	XDHZZ		SMB183493	80063	TUBE	EA	2
13	7	XDHZZ		102-7B10F	80063	NUT WING	EA	2
13	8	XDHHH		SMB183479	80063	LEG ASSEMBLY	EA	2
13	9	XDHZZ		SMC183482	80063	BRACKET	EA	1
13	10	XDHHH		SMC183480	80063	CABLE ASSEMBLY POWER ELECTRICAL	EA	1
13	11	PAHZZ		SMD183484GRP1	80063	COIL RF	EA	1
13	12	XDHZZ		SMD183474-1	80063	THUMB SCREW	EA	4
13	13	PAHZZ		SMD183484GRP2	80063	COIL RF	EA	1
13	14	PAHZZ		SMD183484GRP3	80063	COIL RF	EA	1
13	15	PAHZZ		SMD183484GRP4	80063	COIL RF	EA	1
13	16	PAHZZ		SMD183484GRP10	80063	COIL RF	EA	1
13	17	PAHZZ		SMD183484GRP6	80063	COIL RF	EA	1
13	18	PAHZZ		SMD183484GRP11	80063	COIL RF	EA	1
13	19	PAHZZ		SMD183484GRP7	80063	COIL RF	EA	1
13	20	PAHZZ		SMD183484GRP12	80063	COIL RF	EA	1
13	21	PAHZZ		SMD183484GRP8	80063	COIL RF	EA	1
13	22	PAHZZ		SMD183484GRP13	80063	COIL RF	EA	1
13	23	PAHZZ		SMD183484GRP5	80063	COIL RF	EA	1
13	24	PAHZZ		SMD183484GRP9	80063	COIL RF	EA	1
13	25	PAHZZ		SMD183484GRP14	80063	COIL RF	EA	1
13	26	XDHZZ		SMC183483	80063	BRACKET	EA	1



EL2EN012

Figure 14. Case subassembly.

SECTION II (1) ILLUSTRATION		TM11-6625-471-24P-4						(7)	(8)
(a) FIG NO.	(b) ITEM NO.	(2) SMR CODE	(3) NATIONAL STOCK NUMBER	(4) PART NUMBER	(5) FSCM	(6) DESCRIPTION	USABLE ON CODE	U/M	QTY INC IN UNIT
14	1	XDHZZ	5305-00-206-3716	MS35214-25	96906	SCREW MACHINE		EA	26
14	2	XDHZZ		SMD183478-1	80063	HANDLE RAIL		EA	1
14	3	XDHZZ	5310-00-019-0672	MS35333-107	96906	WASHER LOCK		EA	6
14	4	XDHZZ	5305-00-206-2508	MS35215-53	96906	SCREW MACHINE		EA	6
14	5	PAHZZ		SMD183472-2	80063	CONNECTOR RECEPTACLE ELECTRICAL		EA	1
14	6	PAHZZ		SMB183491	80063	CORD ELECTRICAL		EA	1
14	7	PAHZZ		SMD183478-4	80063	BUMPER RUBBER		EA	12
14	8	XDHZZ		MS15795-605	96906	WASHER FLAT		EA	12
14	9	PAHZZ		RW21G751	81349	RESISTOR FIXED WIREWOUND		EA	1
14	10	XDHZZ		MS35335-74	96906	WASHER LOCK		EA	2
14	11	XDHZZ	5310-00-934-9764	MS35649-205	96906	NUT PLAIN HEX AGON		EA	2
14	12	XDHZZ		SMB183496	80063	BRACKET		EA	1
14	13	XDHZZ	5305-00-206-2511	MS35230-15-57	96906	SCREW MACHINE		EA	2
14	14	XDHZZ	5310-00-019-0669	MS35333-105	96906	WASHER LOCK		EA	30
14	15	XDHZZ	5305-00-934-9763	MS35649-265	96906	NUT PLAIN HEX AGON		EA	28
14	16	XDHZZ		SMB183486	80063	RESISTOR ASSY		EA	1
14	17	XDHZZ		SMB183487	80063	BRACKET GUARD		EA	1
14	18	XDHZZ		SMB173490	80063	BRACKET		EA	1
14	19	XDHZZ		SMB183489	80063	STANDOFF PILOT		EA	2
14	20	PAHZZ		SMD183478-3	80063	CLIP ELECTRICAL		EA	4
14	21	XDHZZ		SMB183488	80063	STANDOFF		EA	4
14	22	XDHZZ		SMB183477-2	80063	HINGE BUTT		EA	2
14	23	XDHZZ	5305-00-059-8248	MS35214-23	96906	SCREW MACHINE		EA	22
14	24	XDHZZ		SMD183485	80063	CASE		EA	1

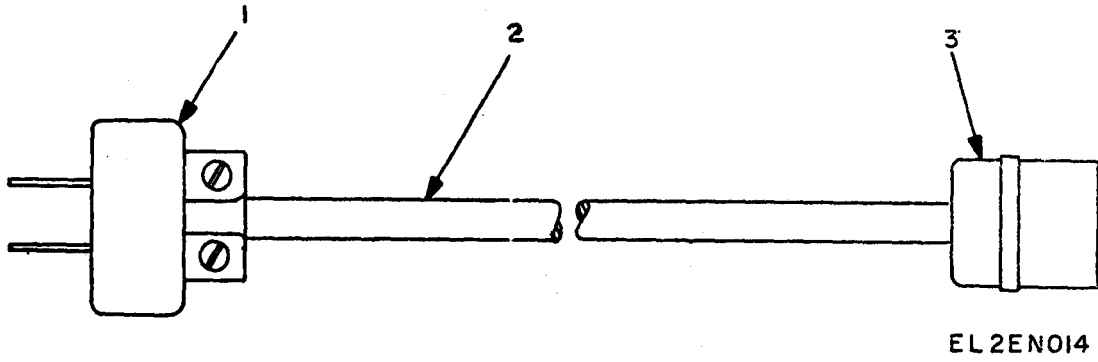


Figure 15. Cable assembly, power.

SECTION II

TM11-6625-471-24P-4

(1)		(2)		(3)	(4)	(5)	(6)	(7)	(8)
ILLUSTRATION		ITEM		NATIONAL STOCK NUMBER	PART NUMBER	FSCM	DESCRIPTION	U/M	QTY INC IN UNIT
(a) FIG NO.	(b) ITEM NO.	SNR CODE					USABLE ON CODE		
GROUP 0201 CABLE ASSEMBLY POWER									
15	1	PAHZZ			U120U	81349	CONNECTOR PLUG ELECTRICAL	EA	1
15	2	PAHZZ			CO02MCF2-18-0300	81349	CABLE POWER ELECTRICAL	EA	1
15	3	PAHZZ			SMC183480-1	80063	CONNECTOR P LUG ELECTRICAL	EA	1

NATIONAL STOCK NUMBER AND PART NUMBER INDEX

NOTE: LATEST NATIONAL STOCK NUMBER AND PART NUMBER ASSIGNMENTS ARE INCLUDED AT END OF INDEX.

STOCK NUMBER	FIGURE NO.	ITEM NO.	STOCK NUMBER	FIGURE NO.	ITEM NO.
5360-00-057-9540	5	18	5905-00-279-2672	3	37
3110-00-057-9542	5	19	5905-00-279-2672	8	24
9390-00-065-5425	9	11	5905-00-295-3410	3	18
5910-00-101-4708	5	26	5905-00-295-3410	8	28
5935-00-160-1364	8	12	5340-00-355-9839	7	8
6625-00-186-6134	2	16	6145-00-542-6092	10	2
5960-00-188-3915	5	30	5950-00-567-8303	6	2
5905-00-192-3987	5	33	5930-00-655-1514	2	8
5935-00-192-4789	2	63	5930-00-655-1575	2	27
5905-00-192-9260	3	35	5960-00-686-8087	3	11
5340-00-205-5159	7	9	5960-00-686-8119	3	12
5935-00-222-9828	3	8	6625-00-697-7821	2	48
5935-00-222-9828	5	31	5950-00-698-5212	6	11
5999-00-244-5391	9	5	5960-00-725-0527	5	29
5935-00-260-0516	3	14	5910-00-752-5128	3	15
5935-00-260-0516	4	20	5905-00-810-2747	2	25
5960-00-262-0210	3	10			

PART NUMBER	FSCM	FIG NO	ITEM NO	PART NUMBER	FSCM	FIG NO	ITEM NO
AN430AD4-3	88044	9	4	MS35333-104	96906	3	5
CE63B100N	81349	8	26	MS35333-104	96906	4	9A
CK26W102Z	81349	4	16	MS35333-104	96906	4	24
CK27AX102K	81349	3	15	MS35333-104	96906	5	37
CK27W102Z	81349	4	25	MS35333-105	96906	2	12
CK27W102Z	81349	5	27	MS35333-105	96906	3	21
CK63V103Z	81349	4	19	MS35333-105	96906	4	9
CM20C240J	81349	5	26	MS35333-105	96906	5	7
CM30BD302JN	81349	5	10	MS35333-105	96906	6	4
CM30B302J	81349	3	36	MS35333-105	96906	7	3
CO02MGF2-18-0300	81349	2	38	MS35333-105	96906	8	4
CO02MGF2-18-0300	81349	15	2	MS35333-105	96906	9	8
CP04A3EC223K	81349	5	32	MS35333-105	96906	12	2
CP07SC2	81349	8	7	MS35333-105	96906	13	2
CP70B1FF805K	81349	8	3	MS35333-105	96906	14	14
JJ089	81349	2	63	MS35333-106	96906	5	2
MS15795-605	96906	3	22	MS35333-106	96906	7	15
MS15795-605	96906	5	6	MS35333-106	96906	8	23
MS15795-605	96906	14	8	MS35333-107	96906	2	5
MS15795-607	96906	7	13	MS35333-107	96906	2	9
MS24232-6	96906	5	29	MS35333-107	96906	7	19
MS24233-1	96906	3	12	MS35333-107	96906	8	14
MS24233-5	96906	3	11	MS35333-107	96906	14	3
MS25082B7	96906	4	12	MS35333-110	96906	3	29
MS35058-22	96906	2	8	MS35333-110	96906	4	11
MS35059-22	96906	2	27	MS35335-74	96906	14	10
MS35198-35	96906	2	65	MS35609-45	96906	3	4
MS35214-12	96906	2	35	MS35609-45	96906	3	6
MS35214-12	96906	3	9	MS35649-205	96906	8	16
MS35214-12	96906	4	14	MS35649-205	96906	14	11
MS35214-12	96906	5	28	MS35649-245	96906	2	28
MS35214-16	96906	2	51	MS35649-245	96906	4	30
MS35214-21	96906	2	42	MS35649-245	96906	5	38
MS35214-23	96906	2	54	MS35649-265	96906	2	13
MS35214-23	96906	4	8	MS35649-265	96906	6	5
MS35214-23	96906	8	5	MS35649-265	96906	7	4
MS35214-23	96906	14	23	MS35649-265	96906	8	13
MS35214-24	96906	5	24	MS35649-265	96906	12	3
MS35214-25	96906	2	3	MS35649-265	96906	14	15
MS35214-25	96906	3	20	MS35649-286	80063	7	16
MS35214-25	96906	5	23	MS35649-286	96906	8	18
MS35214-25	96906	7	1	MS35650-305	96906	2	6
MS35214-25	96906	9	7	MS35650-305	81349	10	4
MS35214-25	96906	12	6	PJ055	81349	10	4
MS35214-25	96906	13	1	RA30NAFD102A	81349	2	24
MS35214-25	96906	14	1	RC20GF104K	81349	5	33
MS35214-28	96906	5	8	RC20GF154K	81349	3	35
MS35214-28	96906	8	6	RC20GF182K	81349	3	37
MS35214-29	80063	7	7	RC20GF182K	81349	8	24
MS35214-40	96906	5	3	RC20GF473K	81349	3	18
MS35214-42	96906	7	12	RRC20GF225JS	81349	3	19
MS35215-53	96906	7	18	RRC20G225JS	81349	4	27
MS35215-53	96906	14	4	RRC20G333JS	81349	3	7
MS35215-57	96906	14	13	RRC20G333JS	81349	3	17
MS35215-56	96906	2	46	RRC20G563JS	81349	8	27
MS35215-36	96906	3	28	RRC32G221JS	81349	5	34
MS35229-3	96906	4	23				
MS35229-64	96906	2	64				
MS35333-104	96906	2	29				
MS35333-104	96906	2	50				
MS35333-104	96906	3	3				

NATIONAL STOCK NUMBER AND PART NUMBER INDEX

PART NUMBER	FSCM	FIG. NO.	ITEM NO.	PART NUMBER	FSCM	FIG. NO.	ITEM NO.
RC20GF473K	81349	8	28	SMB183722	80063	5	13
				SMB183725	80063	5	25
				SMB183726	80063	5	4
RG58CU	81349	10	2	SMB183727	80063	5	12
RN75B2064F	81349	2	21	SMB183728	80063	5	18
RN75B3964F	81349	2	22	SMB183729	80063	5	17
RP151FD802KK	81349	2	25	SMB183730	80063	5	5
RU4B201J	81349	5	9	SMB183736	80063	6	12
RV4NATSA103A	81349	3	31	SMB183737	80063	6	1
RV4NATSA105A	81349	3	32	SMC169324	80063	2	16
RV4NATSA305A	81349	3	34	SMC183473	80063	11	2
RV4NAYFD502A	81349	2	23	SMC183473-1	80063	12	4
RW21G312	81349	3	27	SMC183475	80063	12	1
RW21G751	81349	14	9	SMC183475	80063	12	7
SC-B-76686	80063	2	37	SMC183480	80063	13	10
SCA21825-2	80063	10	3	SMC183480-1	80063	15	3
SCB20651-2	80063	7	8	SMC183482	80063	13	9
SCD20648	80063	7	9	SMC183483	80063	13	26
SMA183696	80063	2	19	SMC183551-1	80063	9	9
SMB169323	80063	4	31	SMC183551-2	80063	9	5
SMB169328	80063	2	18	SMC183551-3	80063	9	6
SMB169329	80063	2	17	SMC183551-4	80063	9	2
SMB173490	80063	14	18	SMC183554	80063	9	1
SMB183477-2	80063	14	22	SMC183556	80063	9	10
SMB183479	80063	13	8	SMC183556-3	80063	10	1
SMB183479-1	80063	13	5	SMC183576	80063	8	10
SMB183486	80063	14	16	SMC183586	80063	2	48
SMB183487	80063	14	17	SMC183679	80063	3	1
SMB183488	80063	14	21	SMC183702	80063	4	1
SMB183489	80063	14	19	SMC183720	80063	5	15
SMB183491	80063	14	6	SMC183720-1	80063	5	19
SMB183492	80063	13	4	SMC183720-2	80063	5	14
SMB183493	80063	13	6	SMC183735	80063	5	16
SMB183496	80063	14	12	SMC183739	80063	6	2
SMB183555	80063	9	11	SMC183740	80063	6	3
SMB183559	80063	9	3	SMC183741	80063	6	6
SMB183564	80063	2	62	SMC183742	80063	6	7
SMB183565	80063	2	58	SMC183743	80063	6	8
SMB183566	80063	2	41	SMC183744	80063	6	9
SMB183567	80063	2	36	SMC183745	80063	6	10
SMB183568	80063	2	39	SMC183746	80063	6	11
SMB183577	80063	8	1	SMD169326	80063	2	7
SMB183578	80063	8	2	SMD169326-11	80063	2	11
SMB183579	80063	8	21	SMD169326-2	80063	2	32
SMB183580	80063	8	22	SMD169326-3	80063	2	53
SMB183584	80063	2	61	SMD169326-6	80063	2	66
SMB183585	80063	2	2	SMD169326-7	80063	2	14
SMB183588	80063	2	1	SMD173715-7	80063	5	14A
SMB183590	80063	2	30	SMD183472	80063	1	2
SMB183591	80063	2	15	SMD183472-2	80063	14	5
SMB183592	80063	2	57	SMD183474	80063	11	1
SMB183668	80063	2	60	SMD183474-1	80063	13	12
SMB183670	80063	2	43	SMD183476	80063	12	5
SMB183671	80063	2	47	SMD183478	80063	13	3
SMB183672	80063	2	49	SMD183478-1	80063	14	2
SMB183673	80063	2	44	SMD183478-3	80063	14	20
SMB183674	80063	2	31	SMD183478-4	80063	14	7
SMB183680	80063	3	39	SMD183484GRP1	80063	13	11
SMB183681	80063	3	23A	SMD183484GRP10	80063	13	16
SMB183682	80063	3	38	SMD183484GRP11	80063	13	18
SMB183683	80063	3	23	SMD183484GRP12	80063	13	20
SMB183695	80063	2	20	SMD183484GRP13	80063	13	22
SMB183698	80063	4	28	SMD183484GRP14	80063	13	25
SMB183698-6	80063	4	29	SMD183484GRP2	80063	13	13
SMB183699	80063	4	18	SMD183484GRP3	80063	13	14
SMB183700	80063	4	6	SMD183484GRP4	80063	13	15
SMB183701	80063	4	26	SMD183484GRP5	80063	13	23
SMB183703-1	80063	4	13	SMD183484GRP6	80063	13	17
SMB183703-2	80063	4	15	SMD183484GRP7	80063	13	19
SMB183704	80063	4	3	SMD183484GRP8	80063	13	21
SMB183705	80063	4	5	SMD183484GRP9	80063	13	24
SMB183706	80063	4	4	SMD183485	80063	14	24
SMB183707	80063	4	7	SMD183550	80063	7	17
SMB183708	80063	4	2	SMD183552	80063	1	1
SMB183709	80063	4	10	SMD183552-1	80063	7	2
SMB183716	80063	5	21	SMD183552-2	80063	7	6
SMB183717	80063	5	1	SMD183552-3	80063	7	14
SMB183718	80063	5	39	SMD183552-4	80063	7	10
SMB183718-7	80063	5	36	SMD183553-1	80063	2	33
SMB183719	80063	5	35	SMD183553-2	80063	2	52

NATIONAL STOCK NUMBER AND PART NUMBER INDEX

PART NUMBER	FSCM	FIG. NO.	ITEM NO.	PART NUMBER	FSCM	FIG. NO.	ITEM NO.
SMD183553-3	80063	2	34	SMD183697	80063	2	14A
SMD183553-4	80063	2	56	SMD183697-2	80063	4	17
SMD183553-5	80063	2	55	SMD183715	80063	2	4
SMD183561	80063	7	5	SMD183715-5	80063	5	22
SMD183562	80063	7	11	SMD183715-8	80063	5	11
SMD183562-10	80063	8	17	SMD183721	80063	5	20
SMD183562-11	80063	8	11	TS101C01	81349	8	12
SMD183562-12	80063	8	9	TS102P01	81349	3	14
SMD183562-14	80063	8	25	TS102P01	81349	4	20
SMD183562-15	80063	8	15	TS102U01	81349	4	22
SMD183562-16	80063	8	19	TS103P01	81349	3	8
SMD183562-9	80063	8	20	TS103P01	81349	5	31
SMD183667	80063	2	45	U120U	81349	2	40
SMD183669	80063	2	59	U120U	81349	15	1
SMD183677	80063	2	26	102-7B10F	80063	13	7
SMD183677-11	80063	3	16	543GTA	81349	8	8
SMD183677-16	80063	3	2	5726-6AL5W	81349	3	13
SMD183677-17	80063	3	33	5726-6AL5W	81349	4	21
SMD183677-18	80063	3	26	5763	81349	5	30
SMD183677-20	80063	3	24	5814A	81349	3	10
SMD183677-21	80063	3	30				

LATEST NATIONAL STOCK NUMBER AND PART NUMBER ASSIGNMENTS

NSN	FIG. NO.	REF. DES. ITEM NO.	NSN	FIG. NO.	REF. DES. ITEM NO.
5310-00-019-0669	2	12	5305-00-638-0502	5	8
5310-00-019-0669	3	21	5305-00-638-0502	8	6
5310-00-019-0669	4	9	5305-00-637-1123	7	12
5310-00-019-0669	5	7	5305-00-637-1125	7	7
5310-00-019-0669	6	4	5310-00-934-9746	2	28
5310-00-019-0669	7	3	5310-00-934-746	4	30
5310-00-019-0669	8	4	5310-00-934-9746	5	38
5310-00-019-0669	9	8	5305-00-934-9763	2	13
5310-00-019-0669	12	2	5305-00-934-9763	6	5
5310-00-019-0669	13	2	5305-00-934-9763	7	4
5310-00-019-0669	14	14	5305-00-934-9763	8	13
5310-00-019-0670	5	2	5305-00-934-9763	12	3
5310-00-019-0670	7	15	5305-00-934-9763	14	15
5310-00-019-0670	8	23	5305-00-954-5640	2	42
5310-00-019-0672	2	5	5305-00-958-1001	2	65
5310-00-019-0672	2	9	5310-00-934-9764	8	16
5310-00-019-0672	7	19	5310-00-934-9764	14	11
5310-00-019-0672	8	14	5310-00-936-9766	2	6
5310-00-019-0672	14	3	5310-00-936-9766	3	25
5310-00-022-8847	3	29	5310-00-939-1061	2	29
5310-00-022-8847	4	11	5310-00-939-1061	2	50
5305-00-059-8248	2	54	5310-00-939-1061	3	3
5305-00-059-8248	4	8	5310-00-939-1061	3	5
5305-00-059-8248	8	5	5310-00-939-1061	4	9A
5305-00-059-8248	14	23	5310-00-939-1061	4	24
5305-00-059-8249	5	24	5310-00-939-1061	5	37
5905-00-104-8330	3	7	5310-00-974-9762	7	16
5905-00-104-8330	3	17	5310-00-974-9762	8	18
5905-00-106-1247	5	34			
5905-00-114-5398	3	19			
5905-00-114-5398	4	27			
5905-00-114-5441	8	27			
5305-00-206-2507	2	46			
5305-00-206-2507	3	28			
5305-00-206-2508	7	18			
5305-00-206-2508	14	4			
5305-00-206-2511	14	13			
5 05-00-206-3716	2	3			
5305-00-206-3716	3	20			
5305-00-206-3716	5	23			
5305-00-206-3716	7	1			
5305-00-206-3716	9	7			
5305-00-206-3716	12	6			
5305-00-206-3716	13	1			
5305-00-206-3716	14	1			
5305-00-207-7468	2	51			
5305-00-637-1124	5	2			
5305-00-637-5884	2	35			
5305-00-637-5884	3	9			
5305-00-637-5884	4	14			
5305-00-637-5884	5	28			



SOMETHING WRONG WITH THIS MANUAL?

THEN... JOT DOWN THE DOPE ABOUT IT ON THIS FORM, TEAR IT OUT, FOLD IT AND DROP IT IN THE MAIL!

FROM: (YOUR UNIT'S COMPLETE ADDRESS)

Commander
Stateside Army Depot
ATTN: AMSTA-US
Stateside, N.J. 07703

DATE 10 July 1975

PUBLICATION NUMBER

TM 11-5840-340-12

DATE

23 Jan 74

TITLE

Radar Set AN/SPS-76

BE EXACT... PIN-POINT WHERE IT IS

IN THIS SPACE TELL WHAT IS WRONG AND WHAT SHOULD BE DONE ABOUT IT:

PAGE NO.	PARA-GRAPH	FIGURE NO.	TABLE NO.
----------	------------	------------	-----------

2-25	2-28		
3-10	3-3		3-1
5-6	5-8		

Recommend that the installation antenna alignment procedure be changed throughout to specify a 2° IFF antenna lag rather than 1°.

REASON: Experience has shown that with only a 1° lag, the antenna servo system is too sensitive to wind gusting in excess of 25 knots, and has a tendency to rapidly accelerate and decelerate as it hunts, causing strain to the drive train. Hunting is minimized by adjusting the lag to 2° without degradation of operation.

3-10	3-3		3-1
------	-----	--	-----

Item 5, Function column. Change "2 db" to "3db."

REASON: The adjustment procedure for the TRANS POWER FAULT indicator calls for a 3 db (500 watts) adjustment to light the TRANS POWER FAULT indicator.

5-6	5-8		
-----	-----	--	--

Add new step f.1 to read, "Replace cover plate removed in step e.1, above."

REASON: To replace the cover plate.

FO3

Zone C 3. On J1-2, change "+24 VDC to "+5 VDC."

REASON: This is the output line of the 5 VDC power supply. + 24 VDC is the input voltage.

TYPED NAME, GRADE OR TITLE, AND TELEPHONE NUMBER

SSG I. M. DeSpirito 999-1776

SIGN HERE:

SSG I. M. DeSpirito

DA FORM 2028-2 (TEST)

1 AUG 74

P.S.--IF YOUR OUTFIT WANTS TO KNOW ABOUT YOUR MANUAL "FIND," MAKE A CARBON COPY OF THIS AND GIVE IT TO YOUR HEADQUARTERS.

HISA 1686-75

TEAR ALONG DOTTED LINE

FILL IN YOUR
UNIT'S ADDRESS

DEPARTMENT OF THE ARMY

OFFICIAL BUSINESS
PENALTY FOR PRIVATE USE \$300

FOLD BACK

POSTAGE AND FEES PAID
DEPARTMENT OF THE ARMY
DOD 314



Commander
US Army Electronics Command
ATTN: DRSEL-MA-Q
Fort Monmouth, New Jersey 07703

CUT ALONG DOTTED LINE

FOLD BACK

REVERSE OF DA FORM 2028-2 (TEST)



THEN... JOT DOWN THE DOPE ABOUT IT ON THIS FORM, CUT IT OUT, FOLD IT AND DROP IT IN THE MAIL!

SOMETHING WRONG WITH THIS MANUAL?

FROM: (YOUR UNIT'S COMPLETE ADDRESS)

DATE

PUBLICATION NUMBER

DATE

BE EXACT... PIN-POINT WHERE IT IS

IN THIS SPACE TELL WHAT IS WRONG AND WHAT SHOULD BE DONE ABOUT IT:

PAGE NO.	PARA-GRAPH	FIGURE NO.	TABLE NO.
----------	------------	------------	-----------

CUT ALONG DOTTED LINE

TYPED NAME, GRADE OR TITLE, AND TELEPHONE NUMBER

SIGN HERE:

DA FORM 2028-2 (TEST)
1 AUG 74

P.S.--IF YOUR OUTFIT WANTS TO KNOW ABOUT YOUR MANUAL "FIND" MAKE A CARBON COPY OF THIS AND GIVE IT TO YOUR HEADQUARTERS.

FILL IN YOUR
UNIT'S ADDRESS

FOLD BACK

DEPARTMENT OF THE ARMY

OFFICIAL BUSINESS
PENALTY FOR PRIVATE USE \$300

POSTAGE AND FEES PAID
DEPARTMENT OF THE ARMY
DOD 314



Commander
US Army Electronics Command
ATTN: DRSEL-MA-Q
Fort Monmouth, New Jersey 07703

CUT ALONG DOTTED LINE

FOLD BACK

REVERSE OF DA FORM 2028-2 (TEST)



SOMETHING WRONG WITH THIS MANUAL?

THEN... JOT DOWN THE DOPE ABOUT IT ON THIS FORM, CUT IT OUT, FOLD IT AND DROP IT IN THE MAIL!

FROM: (YOUR UNIT'S COMPLETE ADDRESS)

DATE

PUBLICATION NUMBER

DATE

BE EXACT... PIN-POINT WHERE IT IS

IN THIS SPACE TELL WHAT IS WRONG AND WHAT SHOULD BE DONE ABOUT IT:

PAGE NO.	PARA-GRAPH	FIGURE NO.	TABLE NO.

IN THIS SPACE TELL WHAT IS WRONG AND WHAT SHOULD BE DONE ABOUT IT:

CUT ALONG DOTTED LINE

TYPED NAME, GRADE OR TITLE, AND TELEPHONE NUMBER

SIGN HERE:

FILL IN YOUR
UNIT'S ADDRESS



FOLD BACK

DEPARTMENT OF THE ARMY

OFFICIAL BUSINESS
PENALTY FOR PRIVATE USE \$300

POSTAGE AND FEES PAID
DEPARTMENT OF THE ARMY
DOD 314



Commander
US Army Electronics Command
ATTN: DRSEL-MA-Q
Fort Monmouth, New Jersey, 07703

CUT ALONG DOTTED LINE

FOLD BACK

By Order of the Secretary of the Army:

BERNARD W. ROGERS
General, United States Army
Chief of Staff

Official:

PAUL T. SMITH
Major General, United States Army
The Adjutant General

Distribution:

Active Army:

USASA (2)
 COE (1)
 TSG (1)
 DARCOM (1)
 MICOM (2)
 TECOM (2)
 TRADOC (2)
 OS Maj Comd (4)
 LOGCOMD (3)
 USACC (4)
 MDW (1)
 Armies (2)
 Corps (2)
 Instl (2) except
 Ft Gillem (10)
 Ft Gordon (10)
 Ft Hauchuca (10)
 Ft Carson (5)
 SAAD (30)
 LBAD (14)
 TOAD (14)
 SHAD (3)
 HISA (Ft Monmouth) (33)
 Ft Richardson (ECOM Oft) (2)

Svc Colleges (1)
 USASIGS (5)
 USAICS (3)
 USAADS (2)
 USAFAS (2)
 USAARMS (2)
 USAIS (2)
 USAES (2)
 MAAG (1)
 USARMIS (1)
 USARDL (1)
 USAERDAA (1)
 USAERDAW (1)
 Sig FLDMS (1)
 Units org under fol TOE: 1 ea.
 11-16
 11-17
 11-36
 11-117
 11-500 (AA-AC)
 32-56

ARNG & USAR: None.
 For explanation of abbreviations used, see AR 310-50.

DEPARTMENT OF THE ARMY
US ARMY AG PUBLICATIONS CENTER
1655 WOODSON ROAD
ST. LOUIS, MISSOURI 63114

OFFICIAL BUSINESS
PENALTY FOR PRIVATE USE \$300

POSTAGE AND FEES PAID
DEPARTMENT OF THE ARMY
DOD 314

